



Ministry of National economy
of the Republic of Kazakhstan
Committee on Statistics

www.stat.gov.kz

Transport in the Republic of Kazakhstan

2015-2019



Nur-Sultan 2020



**Ministry of National economy of the Republic of Kazakhstan
Committee on Statistics**

In accordance with the «Civil Code of the Republic of Kazakhstan (special part)», this material is not subject to reproduction (copying); when using statistical information in its publications (editions), reference to the Committee on Statistics of the Ministry of National economy of the Republic of Kazakhstan.

Transport in the Republic of Kazakhstan

2015-2019

Statistical compilation

Nur-Sultan 2020

Transport in the Republic of Kazakhstan / Statistical compilation / in English /88 pages

Ministry of National economy Republic of Kazakhstan
Committee on Statistics
Editor in Chief Aydapkelov N.S.

The compilation is available on the Internet resource of the Committee on Statistics of the Ministry of National economy of the Republic of Kazakhstan www.stat.gov.kz.

Address: Republic of Kazakhstan, 010000
Nur-Sultan city, Mangilik El street 8,
House of Ministries, 4 Entrance
Ministry of National economy of the
Republic of Kazakhstan
Committee on Statistics
Information service: +7 7172 749010, 749011
Fax: +7 7172 749546
Email Address: e.stat@economy.gov.kz
Internet resource: [http: //stat.gov.kz](http://stat.gov.kz)

Conventional symbols:

-- it is absent

0,0 - a small quantity

x - data are confidential

... - data are absent

In some cases, minor discrepancies between the total and the sum of the items are due to rounding of data.

Foreword

The statistical compilation «Transport in the Republic of Kazakhstan» publishes materials describing the state of the transport complex in 2015-2019. Information is presented on the main economic indicators of transport: gross value added, investment in fixed assets, employment, average monthly wage, and some others. The data on the transport of goods and passengers, the length of transport routes, the presence of rolling stock. The data are given in the regional context and in the whole republic.

Content

Transport complex of the Republic of Kazakhstan in 2019.....	5
1. Main economic indicators of transport	7
2. Railway transport	24
3. Automotive and urban electric transport	31
4. Water transport.....	62
5. Air transport.....	68
6. Pipeline transport.....	80
Methodological notes.....	82

Transport complex of the Republic of Kazakhstan in 2019

The transport complex of the republic, represented by rail, road, inland waterway, air, pipeline modes of transport, roads and railways, shipping routes, is assigned the most important role in the implementation of interfarm and interstate relations. The share of transport in the gross domestic product of the republic in 2019 amounted to 7.1%.

As of January 1, 2020, the public transport network of Kazakhstan consisted of 16.1 thousand km of railways; 95.6 thousand km of roads; 4.1 thousand km of inland waterways; 201.2 km of trolleybus, tram and underground routes; 23.4 thousand km of trunk pipelines.

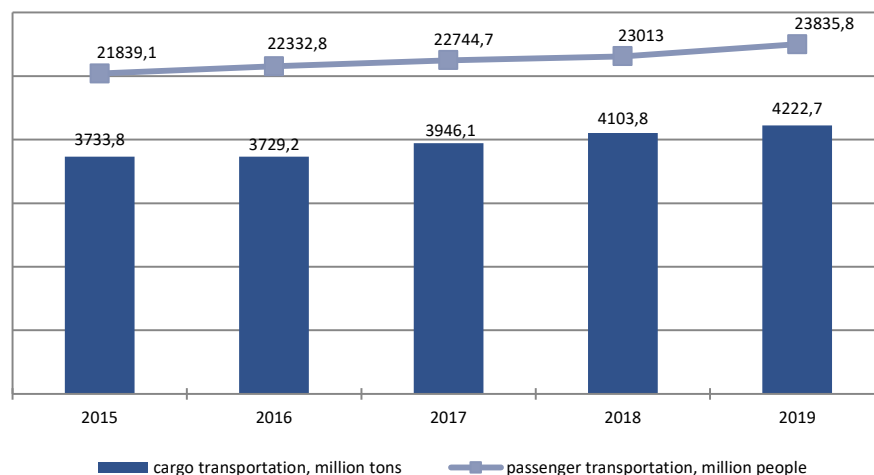
Density of communication lines in the republic

	km / per 1000 sq. m. km of territory				
	2015	2016	2017	2018	2019
Length of the operational length of railway lines	5.5	5.8	5.8	5.8	5.9
Length of trunk pipelines	8.5	8.5	8.5	8.6	8.6
Length of all operated navigable inland public routes	1.5	1.5	1.5	1.5	1.5
Length of public paved roads	31.7	31.9	30.0	30.5	31.1

The volume of cargo transportation by all modes of transport, taking into account the estimated volume of traffic by individual entrepreneurs engaged in commercial transportation, in 2019 amounted to 4222.7 million tons, which is 2.9% more than in 2018.

Passenger traffic, taking into account the estimated volume of traffic by individual entrepreneurs engaged in commercial transportation, increased by 3.6% in 2019 and amounted to 23835 million people.

Dynamics of freight and passenger transportation



In the transport system of Kazakhstan, rail transport plays a leading role. Long transport distances, relatively cheap rates for the transport of passengers and goods make railway transport the most popular among users.

Of the 16060.8 km of railway lines in operation, 574 km belong to other states. In addition, 275.1 km of Kazakhstan railways are located in the territories of other countries. Of the total length of railway tracks, 4237.5 km are electrified, 5039.3 km are double-track and multi-track.

In 2019 397 million tons of cargo were transported by rail, freight turnover amounted to 286.7 billion ton-kilometers. Compared with 2018, the volume of freight transportation increased by 0.2%, freight turnover increased by 1.2%. Passengers were transported – 22.4 million people; passenger turnover was 17.7 billion passenger-kilometers. Compared to 2018, passenger traffic decreased by 3.2%, passenger turnover decreased by 4.5%.

The main types of goods shipped by rail in 2019 are coal (38.3% of the total), ore (19.7%), construction materials (15.6%).

In the development of market infrastructure, the expansion of domestic and foreign trade plays an important role road transport.

As of January 1, 2020, the automobile fleet of the republic has 461.8 thousand trucks, 86.6 thousand buses, 37777 thousand cars.

Road transport of the Republic, taking into account the estimated volume of traffic by individual entrepreneurs engaged in commercial transportation, for 2019. 3550.5 million tons of cargo were transported, freight turnover amounted to 173.5 billion ton-kilometers. Compared with 2018. freight traffic increased by 3.8%, freight turnover decreased by 6.3%. Passengers carried by transport – 23804.7 million people, the passenger turnover from these traffic was 260.9 billion passenger-kilometers. Compared to 2018 there was an increase in these indicators by 3.6% and 5.2%, respectively.

Inland water transport occupies a small proportion in the total volume of work of the transport of the republic. For 2019 1319.3 thousand tons of cargo was transported by shipping as compared with 2018. there was an increase of 11.6%. 36.4 thousand passengers were transported, which is 55.3% less than the volume of 2018.

Air freight in 2019 amounted to 26.7 thousand tons. Compared with 2018, the volume of freight traffic decreased by 39.5%, the volume of passenger traffic increased by 14.4%.

Pipeline transport in Kazakhstan is represented by oil pipelines (8013.9 km) and gas pipelines (15424.9 km). For 2019 273 million tons of oil and gas were pumped over for 2018. – 281.4 million tons.

1. Main economic indicators of transport

1.1 Dynamics of transport development

	2010	2011	2012	2013	2014	2015	2016	2017	2018	2019
Carried (transported) cargo, baggage, cargo-luggage, mln. Tons	2 439.4	2 974.9	3 231.8	3 508.0	3 749.8	3 733.8	3 729.2	3 946.1	4 103.8	4 222.7
including:										
by railway	267.9	279.7	294.8	293.7	390.7	341.4	338.9	387.2	397.9	397.0
by automobile	1 971.8	2 475.5	2 718.4	2 983.4	3 129.1	3 174.0	3 180.7	3 322.3	x	3 550.5
by inland water	1.1	1.1	1.3	1.1	1.3	1.2	1.2	1.6	1.2	1.3
by nautical	4.7	4.6	4.0	4.0	3.6	2.5	2.6	2.1	x	0.8
by air, thous. tons	28.9	31.6	22.0	23.9	19.1	17.2	18.0	22.5	44.1	26.7
by pipeline	194.0	214.0	213.2	225.9	225.0	214.6	205.8	232.8	281.4	273.0
Cargo turnover, billion tkm	385.3	448.8	478.0	495.4	554.9	546.3	518.6	564.0	609.5	597.6
including:										
by railway	213.2	223.6	235.9	231.3	280.7	267.4	239.0	266.6	283.3	286.7
by automobile	80.3	121.1	132.3	145.3	155.7	161.9	163.3	166.1	185.2	173.5
by inland water	0.08	0.08	0.06	0.03	0.03	0.03	0.02	0.03	0.04	0.01
by nautical	3.1	3.2	2.7	2.7	2.5	1.6	1.8	1.6	x	0.7
by air, thous. tons	90.1	92.6	59.5	63.0	49.3	42.7	42.9	53.8	57.6	83.8
by pipeline	88.6	100.7	106.9	116.0	116.0	115.4	114.5	129.5	x	136.7
Passengers transported, million	13 186.5	16 647.2	18 484.6	20 004.3	21 281.2	21 839.1	22 332.8	22 744.7	23 013.0	23 835.8
of them:										
by railway	19.6	20.5	24.4	28.6	23.2	22.5	23.1	22.9	23.1	22.4
by buses	10 594.4	13 259.2	14 687.5	15 757.4	16 775.4	17 920.0	18 314.4	18 237.5	16 538.2	17 532.1
by taxi	2 489.5	3 285.5	3 692.7	4 147.9	4 414.5	3 824.7	3 925.0	4 406.0	6 373.3	6 187.0
by trolleybus	23.0	22.7	18.2	18.2	16.5	18.9	19.6	x	x	x
by tramway	56.5	54.3	51.4	40.5	39.1	37.0	31.8	31.2	27.5	31.3
by inland water	0.1	0.1	0.1	0.1	0.1	0.1	0.1	0.1	x	0.04
by air	3.4	4.1	4.5	5.0	5.4	5.9	6.0	7.4	7.6	8.6
by nautical	-	-	-	-	-	-	-	-	x	0.06
Passenger traffic, mln. pkm	149 065	188 939	213 036	235 738	246 959	251 251	266 784	273 193	281 484	295 517

	2010	2011	2012	2013	2014	2015	2016	2017	2018	2019
of them:										
railway	16 056	16 575	19 256	20 625	18 999	17 012	17 914	18 222	18 562	17 721
bus	103 981	135 965	151 331	166 361	174 695	182 679	194 497	182 065	176 966	181 193
taxi	22 232	28 235	33 494	38 750	42 374	40 039	42 697	58 009	70 508	79 187
trolleybus	99	90	72	80	76	103	93	x	x	x
tramway	226	229	214	184	175	168	139	135	117	135
inland water	3.3	1.9	1.9	1.0	1.2	0.4	1.2	0.7	x	0.7
air	6 469	7 838	8 623	9 688	10 586	11 153	11 313	14 384	14 990	16 886
by nautical	-	-	-	-	-	-	-	-	x	0.4

* Taking into account the transport of passengers by metro.

1.2 Main indicators of transport development

	2015	2016	2017	2018	2019
Carried (transported) cargo, baggage, cargo-luggage, million tons	3 733.8	3 729.2	3 946.1	4 103.8	4 222.7
including:					
by railway	341.4	338.9	387.2	397.9	397.0
by automobile	3 174.0	3 180.7	3 322.3	x	3 550.5
by inland water	1.2	1.2	1.6	1.2	1.3
by nautical	2.5	2.6	2.1	x	0.8
by air, thous. tons	17.2	18.0	22.5	44.1	26.7
by pipeline	214.6	205.8	232.8	281.4	273.0
as a percentage of the previous year	99.6	99.9	105.8	104.0	102.9
including:					
by railway	87.4	99.3	114.3	102.7	99.8
by automobile	101.4	100.2	104.5	103.0	103.8
by inland water	92.3	97.5	138.8	71.7	111.6
by nautical	68.2	103.6	82.0	87.2	45.2
by air, thous. tons	90.0	104.9	125.1	195.9	60.5
by pipeline	95.4	95.9	113.1	120.9	97.0
Cargo turnover, billion tkm	546.3	518.6	564.0	609.5	597.6
including:					
by railway	267.4	239.0	266.6	283.3	286.7
by automobile	161.9	163.3	166.1	185.2	173.5
by inland water	0.03	0.02	0.03	0.04	0.01
by nautical	1.6	1.8	1.6	x	0.7
by air, thous. tons	42.7	42.9	53.8	57.6	83.8
by pipeline	115.4	114.5	129.5	x	136.7
as a percentage of the previous year	98.5	94.9	108.7	108.1	98.0
including:					
by railway	95.3	89.4	111.6	106.3	101.2
by automobile	104.0	100.9	101.8	111.5	93.7
by inland water	115.4	69.3	121.5	154.2	36.2
by nautical	64.7	110.9	89.4	95.7	44.5
by air, thous. tons	86.7	100.5	125.4	107.1	145.5
by pipeline	99.5	99.2	113.1	107.6	98.1
Transported passengers million people ¹⁾	21 839.1	22 332.8	22 744.7	23 013.0	23 835.8
including:					
by railway	22.5	23.1	22.9	23.1	22.4
by automobile	21 744.7	22 239.4	22 643.6	22 911.5	23 719.2
by electric	65.9	64.2	70.8	70.7	85.5
by inland water	0.05	0.1	0.06	x	0.04
by air	5.9	6.0	7.4	7.6	8.6
by nautical	-	-	-	x	0.06
as a percentage of the previous year	102.6	102.3	101.8	101.2	103.6
including:					
by railway	97.0	102.6	99.3	100.8	96.8
by automobile	102.6	102.3	101.8	101.2	103.5
by electric	105.4	97.4	110.3	99.9	120.9
by inland water	72.2	186.4	65.0	138.7	44.7
by air	109.0	101.7	122.3	102.6	114.4
by nautical	-	-	-	-	108.1
Passenger turnover, mln. pkm ¹⁾	251 251	266 784	273 193	281 484	295 517

	Continuation				
	2015	2016	2017	2018	2019
including:					
railway	17 012	17 914	18 222	18 562	17 721
automobile	222 717	237 194	240 074	247 474	260 380
electric	368	362	513	458	530
inland water	0.4	1.2	0.7	x	0.7
air	11 153	11 313	14 384	14 990	16 886
by nautical	-	-	-	x	0.4
as a percentage of the previous year	101.7	106.2	102.4	103.0	105.0
including:					
railway	89.5	105.3	101.7	101.9	95.5
automobile	102.6	106.5	101.3	103.1	105.2
electric	121.4	98.3	141.7	89.3	115.7
inland water	36.4	271.0	60.3	79.9	116.1
air	105.4	101.4	127.1	104.2	112.6
by nautical	-	-	-	-	107.9
Length of public communication lines - total, thousand km	116.3	117.0	116.4	117.1	116.5
including:					
rail	15.3	16.1	16.6	16.6	16.6
automobile ²⁾	96.5	96.4	95.4	96.2	95.6
from them - with a hard coating	86.2	87.0	81.8	83.2	84.8
trolleybus, in double-track terms	0.14	0.14	0.11	0.11	0.11
tramway, in double-track terms	0.1	0.1	0.1	0.1	0.1
subway, in double-track terms	0.01	0.01	0.01	0.01	0.01
shipping	4.2	4.2	4.2	4.1	4.1
Availability of public transport rolling stock, units					
including:					
freight vehicles	12 687	13 320	13 100	12 946	13 183
buses	10 159	10 358	10 290	10 954	10 765
taxi	2 322	2 252	2 065	1 973	1 886
trolleybuses	228	x	x	x	x
tramways	208	170	x	x	147
subway	7	x	x	x	x
inland watercraft	141	179	171	160	155
Availability of cars owned by citizens, thousand units ³⁾	3 641.1	3 635.0	3 639.1	3 637.0	3 568.2
Availability of freight vehicles owned by citizens, units ³⁾	266 543	275 722	269 056	...	290 420
Availability of buses owned by citizens, units ³⁾	56 909	57 325	51 085	...	46 633
Number of transport enterprises, units	1 710	1 817	1 968	2 005	2 092
of them:					
railway	10	11	19	14	13
bus	349	346	345	347	353
taxi	84	85	83	77	61
trolleybus	3	1	1	2	-
tramway	16	17	9	4	2
freight vehicle	1 036	1 125	1 240	1 252	1 310
pipeline	8	8	7	6	8
nautical	14	13	13	13	13
inland water	16	19	20	18	14
air	26	27	20	24	26

¹⁾Taking into account the transport of passengers by metro.

²⁾According to the Ministry of development of infrastructure and industry of the Republic of Kazakhstan.

³⁾According to the Ministry of Internal Affairs of the Republic of Kazakhstan.

1.3 Transportation of goods and passengers by all types of transport in 2019

	Carried (transported) goods, luggage, cargo- luggage, thousand tons	Freight turnover million tkm	Transported passengers thousand people	Passenger turnover million pkm
Republic of Kazakhstan	4 222 702.4	597 613.9	23 835 787.6	295 516.6
Akmola	129 957.9	5 464.9	1 744 948.8	7 421.1
Aktobe	83 001.5	6 578.172	319 458.8	17 531.1
Almaty	197 112.2	8 227.6	937 855.9	16 085.2
Atyrau	175 705.4	62 350.7	195 222.0	1 833.5
Batys Kazakhstan	39 964.3	3 520.4	429 377.7	9 091.0
Zhambyl	103 432.7	2 986.6	1 056 312.2	8 244.3
Karagandy	864 575.0	10 592.1	2 474 030.1	43 025.6
Kostanai	320 132.2	12 210.2	1 868 638.7	18 139.3
Kyzylorda	107 044.8	14 650.1	405 761.3	6 994.8
Mangystau	233 000.3	8 503.1	90 423.0	4 777.3
Pavlodar	133 849.2	35 289.5	1 237 749.0	26 768.2
Soltustik Kazakhstan	52 317.7	3 762.1	508 722.8	3 954.0
Turkistan	85 993.2	3 254.8	997 945.5	4 759.4
Shygyz Kazakhstan	661 523.1	16 169.2	1 716 286.6	24 526.3
Nur-Sultan city	155 083.2	10 408.2	2 574 162.9	20 979.6
Almaty city	257 467.7	20 802.6	5 588 943.4	44 414.4
Shymkent city	111 181.1	7 404.6	1 667 598.2	19 250.6
Unalloyed volume by regions	511 360.8	365 439.1	22 350.7	17 721.0

1.4 Structure of cargo transportation and cargo turnover by types of communication in 2019

as a percentage of the total

	Carried (transported) goods, luggage, cargo- luggage				Freight turnover			
	interna- tional	intrare- publican	suburban	urban	interna- tional	intrare- publican	suburban	urban
All types of trans- port	100	100	100	100	100	100	100	100
of them:								
railway	41.5	74.9	-	-	57.3	81.0	-	-
automobile	1.0	6.7	99.4	100	1.8	4.0	99.8	100
air	0.003	0.005	-	-	0.02	0.01	-	-
by pipeline	57.2	18.2	-	-	40.7	14.9	-	-
by nautical	0.2	-	-	-	0.2	-	-	-
by inland water	0.002	0.2	0.6	-	0.002	0.004	0.2	-

1.5 Structure of passenger transportation and passenger turnover by types of communication in 2019

as a percentage of the total

	Passenger traffic				Passenger turnover			
	international	intrarepublican	suburban	urban	international	intrarepublican	suburban	urban
All types of transport	100	100	100	100	100	100	100	100
of them:								
railway	17.7	39.4	5.3	-	9.6	64	23.5	-
automobile	45.9	48.0	94.6	99.994	5.2	11.2	76.5	99.997
air	36.4	12.6	-	-	85.2	24.8	-	-
tramway	-	-	-	2.461	-	-	-	0.661
trolleybus	-	-	-	2.887	-	-	-	0.853
other types (cableways and others)	-	-	-	0.099	-	-	-	0.260
internal water	-	-	0.03	0.001	-	-	0.02	0.001
by nautical	-	-	-	0.005	-	-	-	0.002

1.6 Revenues from the transportation of goods and passengers by transport enterprises

million tenge

	2015		2016		2017	
	from transportation of goods, baggage, cargo	from transportation of goods, baggage, cargo	from transportation of goods, baggage, cargo	from passenger transportation	from transportation of goods, baggage, cargo	from transportation of goods, baggage, cargo
Transportation - total	1 479 170.8	349 747.4	1 798 403.8	408 454.5	1 953 115.6	484 951.7
including:						
railway	589 437.8	82 848.0	642 795.8	89 193.1	696 226.2	x
freight vehicle	109 956.6	-	101 290.7	-	119 630.2	-
bus	-	83 836.1	-	86 322.0	-	95 592.2
taxi	-	2 103.4	-	1 645.5	-	x
trolleybus	-	942.9	-	918.5	-	x
tramway	-	1 753.1	-	1 717.0	-	1 803.0
pipeline	767 886.6	-	1 040 482.8	-	x	-
internal water	328.2	19.2	381.7	58.3	436.2	x
nautical	6 857.8	-	8 304.4	-	x	-
air	4 703.9	177 537.9	5 148.3	227 289.4	6 342.2	290 403.6

Continuation

	2018		2019	
	from transportation of goods, baggage, cargo	from transportation of goods, baggage, cargo	from transportation of goods, baggage, cargo	from passenger transportation
Transportation - total	2 268 912.8	560 110.4	2 516 319.2	590 711.3
including:				
railway	772 178.0	x	842 824.3	100 651.6
freight vehicle	x	-	220 051.0	-
bus	-	103 217.5	-	90 843.1
taxi	-	3 130.5	-	3 169.3

Continuation

	2018		2019	
	from transportation of goods, baggage, cargo	from transportation of goods, baggage, cargo	from transportation of goods, baggage, cargo	from passenger transportation
trolleybus	-	x	-	x
tramway	-	1 726.5	-	1 863.4
pipeline	1 339 903.0	-	1 440 907.6	-
internal water	407.9	49.9	432.4	24.9
nautical	x	x	4 170.4	58.2
air	7 826.1	337 952.7	7 933.4	387 136.0

* Taking into account the transport of passengers by metro.

1.7 Account production services in the industry «Transport»

billion tenge

	2015	2016	2017	2018	2019
Resources					
Emission	5 028.4	5 681.7	6 869.7	7 718.1	8 557.4
Using					
Intermediate consumption	2 128.6	2 337.0	3 001.3	3 293.3	3 620.3
Gross value added	2 899.8	3 344.7	3 868.4	4 424.8	4 937.1
Percentage of GDP	7.1	7.1	7.1	7.2	7.1

1.8 Account of formation of income in the industry «Transport»

at current prices, mln. tenge

	Resources	Using				
	gross value added	remuneration	other taxes on production	gross profit, mixed income	consumption of fixed capital (-)	net profit, net mixed income
2015	2 899 779.8	579 976.4	31 750.6	2 288 052.8	511 867.2	1 776 185.6
2016	3 344 737.6	645 142.3	47 266.9	2 652 328.5	591 714.3	2 060 614.2
2017	3 868 399.1	787 652.7	38 818.1	3 041 928.3	699 301.5	2 342 626.8
2018	4 424 763.4	966 864.0	37 972.0	3 419 927.4	835 261.3	2 584 666.1
2019	4 937 119.1	1 044 080.2	46 530.7	3 846 508.2	932 357.5	2 914 150.7

Labor and wages in transport

1.9 List number of employees of transport enterprises*

thousand people

	2015	2016	2017	2018	2019
Transportation - total	262.9	264.7	277.3	291.7	286.2
including:					
land transport and pipeline transportation	121.8	131.6	143.0	149.2	150.3
water transport	2.3	2.1	1.9	1.9	1.7
air transport	7.4	7.9	8.3	9.2	9.3
warehousing and auxiliary transport activities	131.5	123.1	124.0	131.4	124.9

* Taking into account small enterprises engaged in entrepreneurial activities.

1.10 List number of employees of transport enterprises by gender*

	2015			2016		
	total	including		total	including	
		male	female		male	female
Transportation - total	262.9	195.3	67.6	264.7	196.5	68.2
including:						
land transport and pipeline transportation	121.8	92.8	29.0	131.6	100.0	31.6
water transport	2.2	1.8	0.4	2.1	1.7	0.4
air transport	7.4	3.5	3.9	7.9	3.8	4.1
warehousing and auxiliary transport activities	131.5	97.2	34.3	123.1	91.0	32.1

Continuation

	2017			2018		
	total	including		total	including	
		male	male		male	male
Transportation - total	277.3	207.4	69.9	291.7	218.4	73.3
including:						
land transport and pipeline transportation	143.0	110.2	32.8	149.2	116.6	32.6
water transport	1.9	1.5	0.4	1.9	1.6	0.3
air transport	8.3	4.0	4.3	9.2	4.7	4.5
warehousing and auxiliary transport activities	124.1	91.7	32.4	131.4	95.5	35.9

Continuation

	2019			
	total	including		
		male	male	
Transportation - total	286.2			71.0
including:				
land transport and pipeline transportation	150.3			32.9
water transport	1.7			0.4
air transport	9.3			4.4
warehousing and auxiliary transport activities	124.9			33.3

* Taking into account small enterprises engaged in entrepreneurial activities.

1.11 Average monthly salary of employees of transport enterprises

	tenge				
	2015	2016	2017	2018	2019
Transport – total	162 041	166 840	181 302	197 452	217 747
including:					
land transport and pipeline transportation	171 609	163 218	186 321	195 131	215 811
water transport	433 874	672 493	587 902	741 551	572 800
air transport	315 009	351 470	341 642	397 291	463 902
warehousing and auxiliary transport activities	140 240	151 074	159 542	178 981	198 361

* Taking into account small enterprises engaged in entrepreneurial activities.

1.12 Movement of workers in transport enterprises

	2015		2016		2017		2018		2019	
	total, thousand people	in percentage of the total number of employees	total, thousand people	in percentage of the total number of employees	total, thousand people	in percentage of the total number of employees	total, thousand people	in percentage of the total number of employees	total, thousand people	in percentage of the total number of employees
Employees accepted during the reporting period	101.8	38.7	147.3	55.7	82.4	29.7	123.7	42.4	64.8	22.7
including:										
land transport and pipeline transportation	47.4	38.9	76.7	58.3	38.1	26.6	59.9	40.1	35.1	23.4
water transport	0.9	40.4	0.8	38.7	0.3	15.6	1.1	57.8	0.6	35.3
air transport	1.5	20.0	1.7	21.5	1.4	16.8	2.6	28.3	2.0	21.3
warehousing and auxiliary transport activities	52.0	39.5	68.1	5.3	42.6	34.4	60.1	45.7	27.1	21.7
Retired workers during the reporting period	61.2	23.3	117.1	44.2	69.2	25.0	71.2	24.4	64.6	22.5
including:										
land transport and pipeline transportation	30.4	25.0	59.5	45.2	30.8	21.5	35.2	23.6	34.5	23.0
water transport	0.5	20.8	1.0	47.5	0.5	26.0	0.8	42.1	0.8	47.1
air transport	1.3	17.4	1.2	14.8	0.9	10.8	1.6	17.4	1.5	16.0
warehousing and auxiliary transport activities	29.0	22.0	55.4	45.0	37.0	29.8	33.6	25.6	27.8	22.3
including in connection with the reduction of headcount	1.5	0.6	20.6	7.8	0.7	0.3	1.1	0.4	1.2	0.4
including:										
land transport and pipeline transportation	0.9	0.8	10.5	8.0	0.1	0.1	0.1	0.1	0.4	0.3
water transport	0.0	0.0	0.2	9.7	0.1	5.2	0.1	5.3	0.1	5.9
air transport	0.0	0.0	0.1	1.9	0.0	0.0	0.0	0.0	0.0	0.0
warehousing and auxiliary transport activities	0.6	0.4	9.8	8.0	0.5	0.4	0.9	0.7	0.7	0.6

* Taking into account small enterprises engaged in entrepreneurial activities.

1.13 Number of men and women employed in hazardous and hazardous working conditions in the field of transport in 2019

	Total, thousand people	Including		As a percentage of the total number of employees of the corresponding gender	Including	
		male	female		male	female
Number of workers employed in conditions that do not meet sanitary and hygienic requirements, standards	54.8	48.9	5.9	23.7	29.2	9.3
of them worked in the following conditions:						
increased noise and vibration	29.7	28.3	1.4	12.9	16.9	2.2
increased dustiness and gas content of the air of the working area exceeding the MPC	8.6	7.0	1.6	3.7	4.2	2.6
Number of workers engaged in heavy physical labor	26.4	25.8	0.6	11.5	15.4	1.0

Investments in fixed assets, fixed assets of transport and commissioning of production facilities

1.14 Investments in fixed capital from all sources of financing by type of transport

	in actual prices, mln. tenge				
	2015	2016	2017	2018	2019
Transportation and warehousing *	682 760	557 231	659 821	783 883	564 350
including:					
railway	175 049	42 490	39 233	95 855	88 664
automobile and urban electric	46 531	31 913	63 341	90 613	85 507
pipeline transportation	320 491	309 588	374 051	181 351	162 723
internal water	1	47	272	1 021	96
nautical	1 482	8 925	10 872	47 988	2 265
air	11 974	12 497	15 260	33 629	60 696
warehousing and auxiliary transport activities	127 232	151 771	156 792	333 425	164 399

* Hereinafter, the data excludes postal and courier activities (Tables 1.14-1.16).

1.15 Fixed assets by transport enterprises

	at the end of the year; at initial (current) cost; million tenge				
	2015	2016	2017	2018	2019
Transportation and warehousing *	7 833 661.5	8 648 004.1	9 315 545.2	11 402 668.1	11 385 909.3
of them:					
railway	1 149 488.4	1 337 438.4	1 817 591.4	1 947 871.2	1 810 085.3
automobile and urban electric	542 090.1	567 902.2	709 486.2	763 426.9	769 449.7
of them:					
bus	76 700.4	84 565.2	86 907.1	117 609.7	1 86 029.1
tramway	2 097.0	2 099.5	2 357.1	3 628.1	5 932.8

Continuation					
	2015	2016	2017	2018	2019
trolleybus	30 251.1	1 350.1	12 017.6	49 645.1	0.7
pipeline transportation	3 482 115.3	3 861 294.3	4 174 973.3	4 440 876.3	4 620 413.7
internal water	9 719.1	10 132.7	7 747.2	3 450.2	2 693.5
nautical	48 769.2	133 868.7	142 260.2	542 449.1	89 304.9
air	255 714.4	262 819.4	190 316.1	358 432.9	403 685.1
warehousing and auxiliary transport activities	2 345 718.8	2 474 548.4	2 273 170.8	3 291 559.2	3 690 277.1

1.16 Degree of depreciation of fixed assets for transport enterprises

in percentage					
	2015	2016	2017	2018	2019
Transportation and warehousing *	24.4	23.6	24.2	24.6	24.6
of them:					
railway	28.4	27.0	30.1	33.3	31.7
automobile and urban electric	24.9	27.4	30.5	32.5	31.3
of them:					
bus	33.3	36.5	38.1	31.8	27.2
tramway	48.9	52.9	48.4	34.8	27.0
trolleybus	24.7	63.1	10.3	32.2	74.8
pipeline transportation	14.6	14.0	12.7	15.7	8.4
internal water	35.2	34.3	45.6	27.3	38.8
nautical	34.6	16.4	22.8	4.8	12.2
air	20.0	25.8	32.3	25.3	49.9
warehousing and auxiliary transport activities	37.3	35.7	37.8	32.9	37.5

1.17 Commissioning of the main production capacity of transport through the construction of new, expansion and reconstruction of existing enterprises

	2015	2016	2017	2018	2019
Railway lines, km	-	988.3	-	-	463.9
Second railway tracks, km	67.5	29.6	-	28.6	284.1
Electrification of railways, km	9.4	5.3	-	-	-
Highways of general use of republican and local value, km	684.2	399.5	727.2	1 142.9	652.3
Gas pipelines and outlets from them, km	1 495.9	207.2	290.2	1 333.7	1 181.3
Oil pipelines, km	128.7	61.7	241.2	39.6	-
Airstrips, meter	-	30.0	-	245.0	-
Air terminals, passengers / hour	-	-	-	2 520	-

Production and import of motor vehicles

1.18 Motor vehicle manufacturing

	units				
	2015	2016	2017	2018	2019
Automobiles – total	14 043	7 355	19 078	31 670	49 389
including:					
freight	1 555	1 805	1 639	1 237	4 227
passenger	12 184	5 192	16 789	30 016	44 076
bus	304	358	650	417	1 086

1.19 Motor vehicle import

	2015		2016		2017		2018		2019	
	units	million USD	units	million USD	units	million USD	units	million USD	units	million USD
All motor vehicles	160 669	2 006.9	71 796	1 231.6	82 979	1 443.9	104 100	2 038.1	98 218	2 158.6
railway rolling stock	27 987	155.0	29 563	225.4	35 003	204.0	29 016	267.1	17 779	308.2
locomotives	999	24.7	54	133.6	37	4.8	626	8.2	152	10.5
passenger wagons	5 721	7.7	363	25.9	504	60.7	5 534	21.4	799	77.2
freight wagons	4 187	92.5	2 948	46.3	3 660	122.0	6 615	222.5	4 538	204.7
container	17 080	30.1	26 198	19.6	30 802	16.5	16 241	15.0	12 290	15.8
Automobile – total	90 071	1 281.7	28 404	641.4	38 215	935.8	39 564	1 097.9	50 336	1 208.7
of them:										
freight	10 722	253.8	3 979	175.2	7 697	298.0	8 511	371.5	8 441	321.4
passenger	76 931	873.1	23 285	416.8	28 831	556.5	28 699	619.3	39 943	795.5
bus	2 418	154.8	1 140	49.4	1 687	81.3	2 354	107.1	1 952	91.8
Aviation technology	95	469.0	2 500	308.8	3 028	193.5	7 037	493.1	10 189	625.2
Ships – total	42 516	101.2	11 329	55.9	6 733	110.6	28 483	180.0	19 914	16.4
of them:										
cargo and passenger	10 955	31.0	6 925	25.5	4 757	72.7	14 029	169.4	33	2.5
specialized ships	31 561	70.2	4 404	30.4	1 976	37.9	14 454	10.6	82	1.9

Consumption of fuel and energy resources in transport

1.20 Consumption of certain types of fuel and energy resources by transport enterprises

	tons				
	2015	2016	2017	2018	2019
Coal	106 200	92 512	119 049	109 872	95 126
including enterprises:					
railway transport	18 442	17 193	33 001	30 305	26 548
automotive and urban	17 056	7 151	6 605	14 266	10 539
electric transport					
water transport	-	-	-	-	-
air transport	81	81	101.3	19.3	-
warehousing and auxiliary					
transport activities	63 802	47 168	64 069	65 282	57 161
transportation by pipeline	-	-	-	-	879
Crude oil	53 049	49 947	50 345	3 928	3 048
including enterprises:					
automobile and urban					
electric transport	-	-	-	-	78
pipeline transportation	3 549	3 142	3 298	3 928	2 970
warehousing and auxiliary					
transport activities	49 500	46 805	47 047	-	-
Natural gas, thousand cubic meters m	350 990	341 181	285 708	315 317	152 459
including enterprises:					
railway transport	1 549	944	1 583	1 407	1 802
automotive and urban					
electric transport	6 275	2 335	2 576	31 649	6 209
pipeline transportation	327 322	325 378	272 884	275 992	139 313
water transport	110	217	47.5	96.9	51.9
air transport	15	33	6.0	74.7	-
warehousing and auxiliary					
transport activities	14 286	9 970	4 828	6 097	5 082
Aviation gasoline	16 197	22 384	3 834	3 959	4 733
including enterprises:					
air transport	16 180	22 371	3 834	3 959	4 733
warehousing and auxiliary					
transport activities	17	13	-	-	-
Gasoline engine	110 530	107 171	103 846	111 419	88 472
including enterprises:					
railway transport	1 831	42 184	35 586	33 677	32 653
automotive and urban					
electric transport	14 892	10 361	11 863	30 444	21 590
pipeline transportation	3 406	3 415	3 141	3 006	3 205
water transport	264	286	229	176	1 210
air transport	989	1 192	2 026	1 405	1 626
warehousing and auxiliary					
transport activities	34 461	31 737	27 446	42 482	28 187
Gas oil (diesel)	1 674 333	611 644	683 484	923 325	703 167
including enterprises:					
railway transport	188 230	195 516	257 035	253 401	262 143
automotive and urban	65 462	58 756	63 374	471 834	252 623

	Continuation				
	2015	2016	2017	2018	2019
electric transport					
pipeline transportation	6 688	5 336	4 299	4 066	3 683
water transport	9 161	6 327	4 741	6 097	5 563
air transport	1 428	1 641	1 874	1 741	1 955
warehousing and auxiliary transport activities	368 681	247 315	201 543	186 187	177 199
Kerosene, including jet fuel of the kerosene type	421 642	318 781	446 028	483 501	493 005
including enterprises:					
railway transport	6	1	1	-	-
automobile and urban electric transport	-	-	-	6.1	1.2
pipeline transportation	1	1	1.2	0.7	0.8
air transport	307 687	305 911	432 197	-	-
warehousing and auxiliary transport activities	113 924	16 315	13 801	29 049	30 938

1.21 Electricity and heat consumption by transport enterprises

	2015	2016	2017	2018	2019
Electricity, thousand kWh	2 570 938	2 274 394	2 943 198	3 217 811.9	3 500 345.8
including enterprises:					
railway transport	751 391	820 823	1 343 462	1 352 234.9	1 490 116.1
automotive and urban electric of transport	112 210	85 161	74 096	136 652.4	112 053.5
pipeline transportation	439 992	437 796	465 327	640 949.2	1 011 106.8
water transport	2 795	3 720	3 531	2 469.1	2 173.1
air transport	3 175	3 363	3 229	3 256.6	3 203.9
warehousing and auxiliary transport activities	1 222 392	879 569	995 479	1 082 249.7	881 692.4
transport activities	563.5	653.0	879.0	-	-
Heat energy, thous. Gcal	59.5	53.1	77.3	-	-
including enterprises:	93.4	202.8	397.0	-	-
railway transport	38.8	36.6	35.2	-	-
automotive and urban electric of transport	-	0.2	0.6	-	-
pipeline transportation	1.3	0.1	0.2	-	-
	292.5	269.1	280.0	-	-

Finance and transport tariffs

1.22 Profit (loss) before taxation of transport enterprises

	million tenge				
	2015	2016	2017	2018	2019
Transportation and warehousing of them:	-1 085 327.7	322 735.1	1 033 954.3	684 572.1	1 317 175.1
land transport and pipeline transportation	-796 988.2	613 885.4	806 368.9	466 936.5	1 025 423.8
railway	-94 325.7	20 609.9	118 180.1	14 395.7	13 640.3
automobile and urban	-24 266.8	6 404.9	14 500.1	-33 010.8	21 188.1

Continuation					
	2015	2016	2017	2018	2019
electric	-678 395.7	586 870.6	673 688.7	485 551.6	990 595.4
pipeline transportation	-320.7	-2 693.3	6.6	302.9	303.4
internal water	13 591.0	-427.7	15 867.7	607.3	33 425.7
air	-278 659.7	-340 936.9	113 459.5	203 634.2	247 823.7
postal and courier activities	3 618.3	3 391.5	2 377.5	2 520.1	2 676.4

1.23 Share of unprofitable enterprises of transport

in percentage					
	2015	2016	2017	2018	2019
land transport and pipeline transportation	48.4	39.8	36.9	35.0	33.4
railway					
automobile and urban	51.8	36.2	33.4	32.7	29.7
electric	57.1	56.3	36.7	44.7	30.2
pipeline transportation	52.3	37.1	33.4	32.2	29.6
land transport and pipeline transportation	40.0	-	21.1	25.0	33.3
internal water	-	-	42.9	60.0	33.3
air	50.0	33.0	55.9	76.9	50.0
warehousing and auxiliary transport activities	43.2	38.2	39.2	36.6	36.5
postal and courier activities	17.7	23.9	18.4	21.4	27.5

1.24 Profitability (lossmaking) of transport enterprises

in percentage					
	2015	2016	2017	2018	2019
land transport and pipeline transportation	-21.0	22.9	26.6	10.9	24.0
railway					
automobile and urban	-24.7	26.3	28.7	11.2	24.6
electric	-9.8	1.6	8.0	0.9	0.7
pipeline transportation	-7.0	1.6	2.6	-4.4	2.3
land transport and pipeline transportation	-35.4	92.9	85.9	27.0	74.0
internal water	-9.5	-49.2	0.2	5.9	2.5
air	5.3	-0.1	3.8	0.1	6.3
warehousing and auxiliary transport activities	-18.6	-18.8	9.2	14.4	17.4
postal and courier activities	7.8	5.7	3.6	3.3	3.2

1.25 Formation of income of transport enterprises in 2019

million tenge		
	Revenues - total	Of them from the main activity (from sales of products (goods and services))
Transportation - total	6 796 220.2	6 331 331.4
including:		
land transport and pipeline transportation	4 633 262.5	4 282 613.4
railway transport	1 789 001.1	1 788 059.5
automobile and urban	414 525.8	357 015.4
electric	1 969 103.5	1 679 187.5
pipeline transportation		
water	87 685.50	87 372.70

Continuation		
	Revenues - total	Of them from the main activity (from sales of products (goods and services))
air	531 970.9	531 282.9
warehousing and auxiliary transport activities	1 462 010.7	1 348 771.8
postal and courier activities	81 290.6	81 290.6

1.26 Costs of transport enterprises in 2019

million tenge					
	Total - costs	Of them			
		material costs - total	other costs	of them	
				taxes and other obligatory payments to the budget	rent
Transportation - total	5 615 552.0	2 052 929.5	2 025 213.8	155 732.5	124 412.8
including:					
land transport and pipeline transportation	3 763 165.6	1 421 919.6	1 233 614.5	113 205.0	53 480.9
railway transport	1 781 505.0	993 636.4	381 338.5	35 246.1	32 142.4
automobile and urban electric	662 058.8	250 439.6	240 292.8	21 291.3	16 893.3
pipeline transportation	1 319 601.8	177 843.6	611 983.5	56 667.6	4 445.2
water	131 265.9	29 508.0	85 548.4	1 329.4	3 498.3
air	523 679.2	312 153.1	112 231.6	5 679.6	26 613.8
warehousing and auxiliary transport activities	1 113 092.9	277 111.0	560 316.7	30 659.8	37 891.2
postal and courier activities	84 348.4	12 237.7	33 502.2	4 858.7	2 928.6

1.27 Debt of transport enterprises

at the end of the year; million tenge					
	2015	2016	2017	2018	2019
Accounts receivable	1 060 866.2	1 401 173.8	8 679 346.4	8 988 221.5	1 255 045.2
from it - overdue	20 421.2	12 974.5	149 532.9	120 150.0	6 169.2
Total debt	17 086 458.9	17 839 125.8	44 055 949.9	48 108 122.8	11 539 762.7
from it - overdue	3 229.5	3 402.7	134 251.7	117 418.1	13 689.9
Bank loan debt	3 465 598.5	9 244 508.1	12 946 504.2	13 001 536.8	3 360 338.8
from it - overdue	650.0	-	44 736.7	34 077.8	11 365.7

1.28 Indices of tariffs for cargo transportation

end of period, in percentage by December of the previous year					
	2015	2016	2017	2018	2019
Freight transport	125.9	104.6	106.8	131.1	103.0
including:					
Railway	120.8	103.9	100.9	171.5	101.7
automobile	98.4	101.6	110.4	103.9	103.4
pipeline	135.2	105.6	106.2	109.0	110.9
internal water	99.5	100.0	101.7	116.2	101.2
air	100.0	122.3	106.8	101.8	103.0

1.29 Indices of tariffs for passenger transport services

	end of period, in percentage by December of the previous year				
	2015	2016	2017	2018	2019
Passenger transport services – total	104.2	107.2	107.4	106.2	101.5
including:					
railway	105.0	110.5	100.7	112.2	104.1
automobile	104.3	106.1	108.8	104.9	101.7
of them:					
local bus	104.9	108.4	109.6	104.9	100.0
intercity bus	105.2	106.0	107.1	107.9	105.4
tramway, trolleybus	101.9	119.1	104.6	...	92.1
air	96.5	107.2	107.4	116.4	101.5

2. Railway transport

2.1 Operating length of public railway tracks*

	2015	2016	2017	2018	2019
	km				
Republic of Kazakhstan	15 341	16 104	16 614	16 635	16 635
Akmola	1 559	1 559	1 559	1 580	1 579
Aktobe	1 444	1 499	1 839	1 839	1 839
Almaty	1 402	1 401	1 401	1 401	1 401
Atyrau	742	742	742	742	742
Batys Kazakhstan	431	431	431	431	431
Zhambyl	1 104	1 104	1 104	1 104	1 104
Karagandy	1 940	2 467	2 467	2 467	2 467
Kostanai	1 271	1 336	1 336	1 336	1 336
Kyzylorda	755	871	871	871	871
Mangystau	926	926	1 097	1 097	1 097
Ontustik Kazakhstan	552	552	552	-	-
Pavlodar	925	925	925	925	925
Soltustik Kazakhstan	807	807	807	807	807
Turkistan	-	-	-	552	552
Shygys Kazakhstan	1 209	1 209	1 209	1 209	1 209
Roads of the Republic of Kazakhstan on the territory of other countries	275	275	275	275	275

* Included in the list of other countries in the territory of Kazakhstan and Kazakhstan, which travels through the territory of another state.

2.2 Railway density*

at the end of the year; km per 1000 square meters. km of territory

	2015	2016	2017	2018	2019
Republic of Kazakhstan	5.53	5.81	6.00	5.89	5.89
Akmola	10.66	10.66	10.66	10.81	10.81
Aktobe	4.80	4.99	6.12	6.08	6.08
Almaty	6.26	6.27	6.27	6.27	6.27
Atyrau	6.26	6.26	6.26	6.26	6.26
Batys Kazakhstan	2.85	2.85	2.85	2.11	2.11
Zhambyl	7.65	7.65	7.65	7.23	7.23
Karagandy	4.53	5.76	5.76	5.76	5.76
Kostanai	6.49	6.82	6.82	6.48	6.48
Kyzylorda	3.34	3.85	3.85	3.85	3.85
Mangystau	5.59	5.59	6.62	6.62	6.62
Ontustik Kazakhstan	4.70	4.70	4.70	-	-
Pavlodar	7.41	7.41	7.42	6.32	6.32
Soltustik Kazakhstan	8.23	8.23	8.23	6.31	6.31
Turkistan	-	-	-	4.75	4.75
Shygys Kazakhstan	4.27	4.27	4.27	4.27	4.27

* Without roads of the Republic of Kazakhstan on the territory of other countries.

2.3 Railway rolling stock and its use

	units				
	2015	2016	2017	2018	2019
Locomotives	1 804	1 725	1 732	1 714	1 722
including:					
electric locomotives	550	539	549	546	x
diesel locomotives	1 254	1 186	1 183	1 168	1 173
Trailers	307	287	291	288	288
Passenger wagons	2 590	2 630	2 661	2 597	2 490
Luggage wagons	28	28	28	28	28
Presence of freight cars belonging to enterprises - providers of railway transport services	59 025	56 504	54 925	54 656	54 596
including:					
covered wagons	8 806	8 415	8 041	8 031	8 031
semiwagons	30 797	30 146	30 491	30 926	x
wagons platforms	3 000	2 280	2 271	2 259	2 259
Cisterns	5 657	5 438	5 232	5 030	5 030
refrigerated trucks	3	1	1	1	1
other wagons	10 762	10 224	8 889	8 409	8 349
Presence of freight cars belonging to enterprises - consumers of rail transport services	73 177	72 848	75 496	80 050	83 917
Average daily performance of freight cars, tcm of net per day	8 997	9 959	10 140	9 587	9 723
Precinct train speed, km / h	44.0	44.0	44.0	43.0	44.0
Turnover of the working car, day	5.4	5.0	4.8	5.1	5.1
Total capacity, thousand kW / total passenger capacity					
Total locomotives	5 196.7	4 150.0	5 671.3	6 819.0	6 864.2
including:					
electric locomotives	3 106.0	x	3 367.3	3 537.7	x
diesel locomotives	2 090.7	x	2 304.0	3 281.3	3 303.4
Passenger wagons, total	82 755	83 385	78 134	73 616	73 298
including:					
SV - wagons	2 275	2 095	1 590	1 342	330
compartment double wagons	340	340	1 150	1 150	408
four-seater wagons	34 468	35 674	35 126	33 928	31 742
second-class wagons	43 038	42 606	37 362	33 894	34 830
common wagons	2 581	2 617	2 906	3 302	5 988
wagons restaurants	x	x	-	-	-
other passenger wagons	x	x	-	-	-
Total lifting capacity, thousand tons					
Cargo wagons belonging to enterprises - providers of railway transport services, total	4 030.1	3 928.8	3 823.9	3 791.7	3 787.7
including:					
covered wagons	596.7	570.6	545.2	544.6	544.6
wagons platforms	216.8	162.1	161.5	161.5	161.5
semiwagons	2 096.8	2 130.5	2 156.6	2 124.6	x
cisterns	371.6	357.8	344.9	345.0	345.0
refrigerators	1.3	0.1	0.1	0.1	0.1
other wagons	746.9	707.7	615.6	615.9	611.9

2.4 Age structure of public railway rolling stock

	at the end of the year; in percentage				
	2015	2016	2017	2018	2019
Electric locomotives	100	100	100	100	100
including in service, years					
up to 5 years	6.7	10.0	12.8	11.0	8.4
over 5 to 10	4.7	4.5	7.3	9.0	12.0
over 10 to 15	0.6	0.9	1.0	0.9	0.4
over 15 to 20	-	-	-	-	0.5
over 20 to 25	7.7	2.0	0.9	0.9	-
over 25 years	80.3	82.6	78.0	78.2	78.7
Diesel locomotives	100.0	100.0	100.0	100.0	100.0
including in service, years					
up to 5 years	30.1	22.9	11.8	6.2	6.4
over 5 to 10	5.6	14.8	24.8	33.7	32.0
over 10 to 15	0.8	0.8	2.1	1.9	3.5
over 15 to 20	0.1	0.1	0.1	0.1	0.5
over 20 to 25	3.9	1.0	-	-	-
over 25 years	59.5	60.3	61.2	58.1	57.5
Passenger wagons	100.0	100.0	100.0	100.0	100
including in service, years					
up to 5 years	25.5	27.4	28.9	22.7	18.4
over 5 to 10	3.1	2.3	6.0	15.0	22.5
over 10 to 15	4.2	4.9	7.0	x	5.6
over 15 to 20	0.2	0.2	0.1	x	2.0
over 20 to 25	18.5	16.8	13.5	7.6	1.8
over 25 years	48.5	48.4	44.5	47.4	49.7
Baggage wagons	100	100	100	100	100
including in service, years					
up to 5 years	-	-	-	-	21.4
over 5 to 10	28.6	21.4	28.6	x	-
over 10 to 15	-	-	-	-	28.6
over 15 to 20	-	-	-	-	-
over 20 to 25	71.4	71.4	71.4	x	50
over 25 years	100	100	100	100	100
Freight wagons					
including in service, years					
up to 5 years	22.1	22.6	22.7	47.0	47.0
over 5 to 10	5.2	14.0	13.8	15.5	15.6
over 10 to 15	3.6	6.6	7.7	5.5	5.5
over 15 to 20	13.9	1.3	0.1	2.9	2.9
over 20 to 25	13.3	26.6	25.7	25.1	25.0

2.5 Main indicators of rail transport

	2015	2016	2017	2018	2019
Cargo, luggage, cargo luggage, million tons transported	341.4	338.9	387.2	397.9	397.0
including by types communication:					
International	137.0	130.6	146.7	x	x
CIS countries	121.3	116.2	-	-	-
transit	15.7	14.4	17.5	x	x
export	-	-	83.5	x	x

	Continuation				
	2015	2016	2017	2018	2019
EAEU countries	-	-	83.0	x	x
non-EAEU countries	-	-	0.4	-	x
import	-	-	45.8	46.5	x
EAEU countries	-	-	45.6	46.5	x
non-EAEU countries	-	-	0.1	-	x
Intrarepublican	204.4	208.3	240.6	x	241.7
Cargo turnover, billion tkm	267.4	239.0	266.6	283.3	286.7
including by types communication:					
International	159.7	130.1	143.8	154.4	x
CIS countries	132.2	104.9	-	-	-
transit	27.6	25.2	28.0	32.7	x
export	-	-	75.5	x	x
EAEU countries	-	-	74.9	x	x
non-EAEU countries	-	-	0.6	-	x
import	-	-	40.2	x	x
EAEU countries	-	-	40.1	x	x
non-EAEU countries	-	-	0.1	-	x
Intrarepublican	107.6	108.9	122.8	128.9	126.9
Passengers transported, thousand people	22 497.8	23 073.2	22 914.3	23 091.4	22 350.7
including by types communication:					
International	x	2 457.2	x	x	x
Intrarepublican	14 952.1	16 249.7	16 336.5	16 465.2	16 793.5
suburban	x	x	3 847.4	x	3 961.1
Passenger turnover, billion pkm	17.0	17.9	18.2	18.6	17.7
including by types communication:					
International	x	1.9	x	x	x
Intrarepublican	14.1	15.2	15.5	16.0	16.0
suburban	x	x	0.6	x	0.5

2.6 Transported by railroad transportation

	million tons				
	2015	2016	2017	2018	2019
Total	218.8	214.7	241.4	254.0	x
including by road sections:					
Akmola	5.7	6.4	6.3	7.8	x
Aktobe	14.3	15.5	18.5	18.4	x
Almaty	5.7	5.4	8.6	10.6	x
Atyrau	10.5	8.8	9.5	10.1	x
Batys Kazakhstan	2.3	2.4	2.5	2.3	x
Zhambyl	7.3	7.3	7.9	8.5	x
Karagandy	45.6	43.1	48.3	47.5	x
Kostanai	23.8	23.8	26.9	30.7	x
Kyzylorda	1.5	1.9	1.7	1.9	x
Mangystau	2.9	3.1	3.8	4.6	x
Pavlodar	72.9	70.5	78.9	81.2	x
Shygys Kazakhstan	9.2	8.5	8.4	8.1	x
Semey	8.9	8.5	9.7	11.1	x
Shymkent	8.2	9.5	10.3	11.3	x

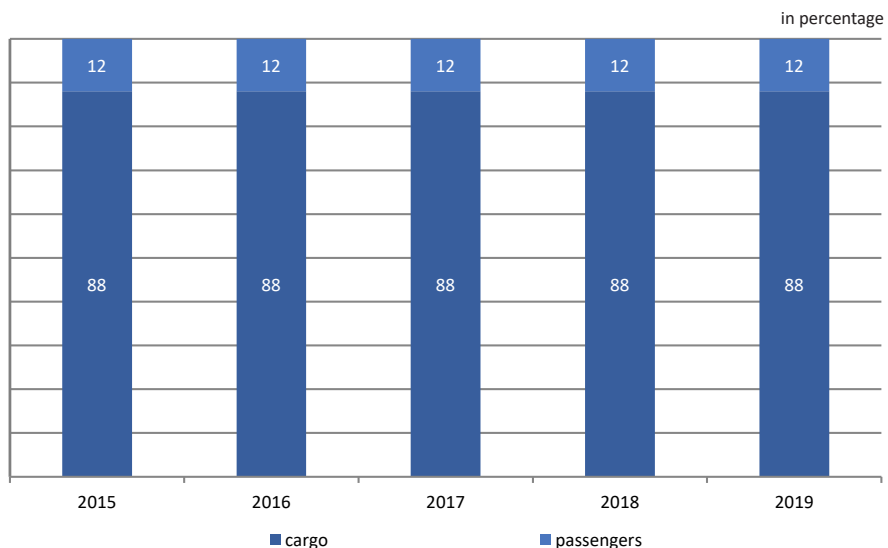
2.7 Structure of goods sent by rail public transport

	Cargo structure									
	million tons					in percentage to total				
	2015	2016	2017	2018	2019	2015	2016	2017	2018	2019
Sent cargo by rail including:	218.8	214.7	241.4	254.0	x	100.0	100.0	100.0	100.0	100.0
coal	95.8	90.6	102.5	104.4	x	43.8	42.2	42.5	41.1	38.3
coke	0.4	0.4	0.6	0.7	x	0.2	0.2	0.3	0.3	0.3
oil and oil products	15.6	13.9	14.0	13.9	x	7.1	6.5	5.8	5.5	3.7
any ore	37.5	36.5	42.0	44.7	x	17.1	17.0	17.4	17.6	19.7
black metals	5.1	6.0	6.7	6.5	x	2.3	2.8	2.8	2.6	2.7
ferrous scrap	1.0	1.4	1.8	1.8	x	0.5	0.7	0.7	0.7	0.7
chemical and mineral fertilizers	2.6	2.2	3.3	3.4	x	1.2	1.0	1.3	1.4	1.6
construction cargo	28.7	30.9	26.5	28.9	x	13.1	14.4	14.0	14.6	15.5
timber cargo	0.6	0.6	0.7	1.0	x	0.3	0.3	0.3	0.4	0.3
corn	7.6	8.5	8.5	11.2	x	3.5	4.0	3.5	4.4	5.5
other goods	23.8	23.7	34.9	37.5	x	10.9	11.0	11.5	11.5	11.3

2.8 Traffic density per 1 km of operational length of railway tracks

	2015	2016	2017	2018	2019
Freight turnover, mln. tkm	18.11	15.39	16.62	17.64	17.85
Passenger turnover, mln. pkm	1.15	1.15	1.14	1.16	1.10

Structure of income of enterprises of general use railway transport from freight and passenger transportation



2.9 Incidents on the railways*

	2015	2016	2017	2018	2019
Number of accidents, units	118	124	154	5	925
Died, people	74	71	90	1	47
Injured, people	45	59	74	24	56

* Hereinafter, the data of the Ministry of development of infrastructure and industry of the Republic of Kazakhstan (Tables 2.9-2.12).

2.10 Number of railway accidents*

	2015	2016	2017	2018	2019	units
Republic of Kazakhstan	118	124	154	5	925	
Akmola	8	10	12	-	90	
Aktobe	8	7	7	-	113	
Almaty	14	12	23	-	106	
Atyrau	2	1	3	1	22	
Batys Kazakhstan	5	5	3	-	36	
Zhambyl	8	14	10	2	77	
Karagandy	14	13	14	-	123	
Kostanai	6	6	7	-	69	
Kyzylorda	5	10	13	-	54	
Mangystau	3	1	9	1	18	
Ontustik Kazakhstan	13	14	22	-	-	
Pavlodar	2	2	1	1	64	
Soltustik Kazakhstan	7	8	6	-	-	
Turkistan	-	-	-	-	-	
Shygys Kazakhstan	9	13	12	-	98	
Nur-Sultan city	2	-	4	-	-	
Almaty city	12	8	8	-	-	
Shymkent city	-	-	-	-	55	

2.11 Number of died in railway accidents*

	2015	2016	2017	2018	2019	people
Republic of Kazakhstan	74	71	90	1	47	
Akmola	6	6	7	-	2	
Aktobe	4	4	4	-	4	
Almaty	10	7	18	-	12	
Atyrau	1	-	-	-	-	
Batys Kazakhstan	2	3	1	-	4	
Zhambyl	4	14	5	1	3	
Karagandy	9	6	6	-	5	
Kostanai	2	1	1	-	1	
Kyzylorda	3	5	8	-	3	
Mangystau	3	1	15	-	1	
Ontustik Kazakhstan	9	9	10	-	-	
Pavlodar	1	1	1	-	2	
Soltustik Kazakhstan	5	7	5	-	-	
Turkistan	-	-	-	-	-	

Continuation					
	2015	2016	2017	2018	2019
Shygys Kazakhstan	6	5	5	-	3
Nur-Sultan city	2	-	1	-	-
Almaty city	7	2	3	-	-
Shymkent city	-	-	-	-	7

2.12 Number of injured in railway accidents*

people					
	2015	2016	2017	2018	2019
Republic of Kazakhstan	45	59	74	24	56
Akmola	2	4	3	-	5
Aktobe	4	3	2	-	3
Almaty	5	5	5	-	12
Atyrau	1	1	3	-	-
Batys Kazakhstan	3	3	1	-	1
Zhambyl	4	-	4	24	3
Karagandy	5	9	2	-	4
Kostanai	4	6	1	-	1
Kyzylorda	2	5	4	-	3
Mangystau	-	1	24	-	2
Ontustik Kazakhstan	4	5	12	-	-
Pavlodar	1	1	-	-	3
Soltustik Kazakhstan	2	2	1	-	-
Turkistan	-	-	-	-	-
Shygys Kazakhstan	3	8	7	-	10
Nur-Sultan city	-	-	2	-	-
Almaty city	5	6	3	-	-
Shymkent city	-	-	-	-	9

3. Automotive and urban electric transport

3.1 Length of public roads*

	km				
	2015	2016	2017	2018	2019
Republic of Kazakhstan	96 529.0	96 353.0	95 409.6	96 245.7	95 629.0
Akmola	7 891.0	7 890.0	7 884.0	7 942.7	7 940.0
Aktobe	6 553.0	6 958.0	6 553.0	6 906.8	6 921.4
Almaty	9 316.0	9 334.0	8 952.0	9 602.9	9 603.4
Atyrau	3 051.0	3 052.0	3 052.0	3 181.6	3 046.5
Batys Kazakhstan	6 428.0	6 531.0	6 497.0	6 497.0	6 499.7
Zhambyl	5 351.0	5 228.0	5 094.0	4 327.5	4 329.1
Karagandy	8 844.0	8 854.0	8 856.0	8 855.9	8 769.4
Kostanai	9 290.0	9 290.0	9 289.6	9 299.9	9 283.2
Kyzylorda	3 354.0	3 376.0	3 446.0	3 451.2	3 397.8
Mangystau	2 586.0	2 692.0	2 708.0	2 846.0	2 821.0
Ontustik Kazakhstan	7 197.0	6 810.0	6 670.0	-	-
Pavlodar	5 659.0	5 454.0	5 449.0	5 441.0	5 476.1
Soltustik Kazakhstan	8 998.0	8 998.0	8 998.0	8 998.0	8 995.8
Turkistan	-	-	-	6 944.2	6 548.1
Shygyz Kazakhstan	12 011.0	11 886.0	11 961.0	11 951.0	11 997.6

* Hereinafter, the data of the Ministry of development of infrastructure and industry of the Republic of Kazakhstan (Tables 3.1-3.10).

3.2 Length of roads of republic significance*

	km				
	2015	2016	2017	2018	2019
Republic of Kazakhstan	23 699.0	23 910.0	24 100.0	24 387.3	24 727.1
Akmola	2 261.0	2 264.0	2 267.0	2 316.7	2 314.0
Aktobe	1 894.0	1 893.0	1 894.0	1 891.8	1 869.0
Almaty	2 529.0	2 546.0	2 813.0	2 821.9	2 821.0
Atyrau	990.0	990.0	990.0	1 120.0	1 120.0
Batys Kazakhstan	1 287.0	1 393.0	1 393.0	1 414.0	1 417.0
Zhambyl	1 237.0	1 237.0	1 237.0	1 152.5	1 153.4
Karagandy	2 773.0	2 783.0	2 785.0	2 784.6	2 785.0
Kostanai	1 410.0	1 410.0	1 410.0	1 409.9	1 407.2
Kyzylorda	1 107.0	1 107.0	1 107.0	1 016.0	1 016.0
Mangystau	1 033.0	1 033.0	1 049.0	1 049.0	1 025.0
Ontustik Kazakhstan	786.0	848.0	766.0	-	-
Pavlodar	1 510.0	1 524.0	1 507.0	1 662.7	1 662.8
Soltustik Kazakhstan	1 468.0	1 468.0	1 468.0	1 468.0	1 969.8
Turkistan	-	-	-	866.2	753.0
Shygyz Kazakhstan	3 414.0	3 414.0	3 414.0	3 414.0	3 414.0

3.3 Length of roads of region significance*

	2015	2016	2017	2018	2019
km					
Republic of Kazakhstan	33 884.0	33 507.0	32 743.0	33 713.2	32 093.3
Akmola	2 665.0	2 661.0	2 661.0	2 661.0	2 661.0
Aktobe	1 057.0	1 070.0	1 057.0	1 263.0	1 262.9
Almaty	6 787.0	6 788.0	6 139.0	6 781.0	6 138.6
Atyrau	972.0	973.0	973.0	973.0	837.9
Batys Kazakhstan	1 758.0	1 758.0	1 724.0	1 724.0	1 724.0
Zhambyl	2 210.0	1 943.0	1 944.0	1 987.0	1 987.4
Karagandy	3 549.0	3 549.0	3 549.0	3 549.0	3 462.1
Kostanai	2 209.0	2 209.0	2 209.0	2 209.0	2 274.7
Kyzylorda	477.0	472.0	472.0	563.2	557.4
Mangystau	1 012.0	942.0	942.0	940.0	855.9
Ontustik Kazakhstan	4 331.0	4 330.0	4 261.0	-	-
Pavlodar	1 184.0	1 139.0	1 139.0	975.0	1 010.0
Soltustik Kazakhstan	2 487.0	2 487.0	2 487.0	2 487.0	1 983.0
Turkistan	-	-	-	4 415.0	4 152.4
Shygyz Kazakhstan	3 186.0	3 186.0	3 186.0	3 186.0	3 186.0

3.4 Length of roads of district significance*

	2015	2016	2017	2018	2019
km					
Republic of Kazakhstan	38 946.0	38 936.0	38 567.0	38 145.2	38 808.5
Akmola	2 965.0	2 965.0	2 956.0	2 965.0	2 965.0
Aktobe	3 602.0	3 995.0	3 602.0	3 752.0	3 789.5
Almaty	-	-	-	-	643.7
Atyrau	1 089.0	1 089.0	1 089.0	1 088.6	1 088.6
Batys Kazakhstan	3 383.0	3 380.0	3 380.0	3 359.0	3 358.7
Zhambyl	1 904.0	2 048.0	1 913.0	1 188.0	1 188.4
Karagandy	2 522.0	2 522.0	2 522.0	2 522.3	2 522.3
Kostanai	5 671.0	5 671.0	5 671.0	5 681.0	5 601.3
Kyzylorda	1 770.0	1 797.0	1 867.0	1 872.0	1 824.3
Mangystau	541.0	717.0	717.0	857.0	940.1
Ontustik Kazakhstan	2 081.0	1 632.0	1 643.0	-	-
Pavlodar	2 965.0	2 791.0	2 803.0	2 803.3	2 803.3
Soltustik Kazakhstan	5 043.0	5 043.0	5 043.0	5 043.0	5 043.0
Turkistan	-	-	-	1 663.0	1 642.7
Shygyz Kazakhstan	5 411.0	5 286.0	5 361.0	5 351.0	5 397.6

3.5 Length of public paved roads*

	2015	2016	2017	2018	2019
km					
Republic of Kazakhstan	86 244.0	87 028.7	81 814.1	83 239.5	84 833.6
Akmola	7 854.0	7 853.5	7 798.0	7 847.0	7 903.0
Aktobe	5 427.0	6 109.8	5 454.0	5 124.9	5 450.6
Almaty	9 176.0	9 194.0	8 897.0	8 827.9	9 427.6
Atyrau	2 221.0	2 237.0	2 240.7	2 401.0	2 237.6
Batys Kazakhstan	4 631.0	4 733.5	3 291.0	4 357.0	4 646.2

Continuation					
	2015	2016	2017	2018	2019
Zhambyl	5 194.0	5 169.2	5 089.0	4 313.6	4 315.3
Karagandy	8 722.0	8 731.5	8 393.0	8 430.9	8 738.0
Kostanai	7 873.0	7 873.8	6 203.0	7 675.9	7 759.5
Kyzylorda	2 804.0	2 826.0	2 867.4	2 882.4	3 029.0
Mangystau	2 421.0	2 476.0	2 399.0	2 522.6	2 393.6
Ontustik Kazakhstan	6 821.0	6 696.6	6 454.0	-	-
Pavlodar	4 870.0	4 858.8	4 799.0	4 820.0	4 903.6
Soltustik Kazakhstan	7 114.0	7 114.0	7 114.0	7 113.2	6 987.0
Turkistan	-	-	-	6 555.2	6 355.7
Shygys Kazakhstan	11 116.0	11 155.0	10 815.0	10 367.9	10 687.0

3.6 Length of public paved roads republic significance*

km					
	2015	2016	2017	2018	2019
Republic of Kazakhstan	23 577.0	23 769.0	22 532.0	22 664.0	24 454.0
Akmola	2 224.0	2 227.0	2 172.0	2 221.0	2 277.0
Aktobe	1 894.0	1 893.0	1 792.0	1 581.0	1 869.0
Almaty	2 502.0	2 519.0	2 759.0	2 784.0	2 794.0
Atyrau	974.0	973.0	971.0	1 084.0	1 103.0
Batys Kazakhstan	1 284.0	1 390.0	1 129.0	1 129.0	1 417.0
Zhambyl	1 237.0	1 237.0	1 237.0	1 152.0	1 153.0
Karagandy	2 773.0	2 783.0	2 444.0	2 482.0	2 785.0
Kostanai	1 410.0	1 410.0	1 318.0	1 318.0	1 407.0
Kyzylorda	1 107.0	1 089.0	1 030.0	957.0	1 016.0
Mangystau	1 004.0	1 004.0	926.0	926.0	996.0
Ontustik Kazakhstan	786.0	848.0	766.0	-	-
Pavlodar	1 507.0	1 521.0	1 448.0	1 625.0	1 663.0
Soltustik Kazakhstan	1 468.0	1 468.0	1 468.0	1 468.0	1 814.0
Turkistan	-	-	-	866.0	753.0
Shygys Kazakhstan	3 407.0	3 407.0	3 072.0	3 072.0	3 407.0

3.7 Length of public paved roads region significance*

km					
	2015	2016	2017	2018	2019
Republic of Kazakhstan	32 620.0	32 242.0	31 995.0	31 084.0	30 520.8
Akmola	2 665.0	2 661.0	2 661.0	2 661.0	2 661.0
Aktobe	1 048.0	1 061.0	1 048.0	1 172.0	1 172.6
Almaty	6 674.0	6 675.0	6 138.0	6 044.0	6 044.0
Atyrau	690.0	691.0	691.0	677.0	555.8
Batys Kazakhstan	1 493.0	1 493.0	1 931.0	1 459.0	1 459.0
Zhambyl	2 210.0	1 943.0	1 944.0	1 988.0	1 987.4
Karagandy	3 458.0	3 458.0	3 458.0	3 458.0	3 462.1
Kostanai	2 077.0	2 077.0	2 009.0	2 077.0	2 142.6
Kyzylorda	471.0	466.0	466.0	539.0	539.4
Mangystau	883.0	831.0	831.0	796.0	801.6
Ontustik Kazakhstan	4 315.0	4 291.0	4 222.0	-	-
Pavlodar	1 173.0	1 133.0	1 133.0	965.0	1 006.0
Soltustik Kazakhstan	2 416.0	2 416.0	2 416.0	2 415.0	1 943.0

Continuation					
	2015	2016	2017	2018	2019
Turkistan	-	-	-	4 223.0	4 136.4
Shygys Kazakhstan	3 047.0	3 046.0	3 047.0	2 610.0	2 610.0

3.8 Length of public paved roads district significance*

km					
	2015	2016	2017	2018	2019
Republic of Kazakhstan	30 047.0	30 984.0	27 287.0	29 491.0	29 858.5
Akmola	2 965.0	2 965.0	2 965.0	2 965.0	2 965.0
Aktobe	2 485.0	3 155.0	2 614.0	2 372.0	2 409.1
Almaty	-	-	-	-	589.6
Atyrau	557.0	557.0	579.0	640.0	578.8
Batys Kazakhstan	1 854.0	1 851.0	231.0	1 769.0	1 770.2
Zhambyl	1 747.0	1 989.0	1 908.0	1 174.0	1 174.6
Karagandy	2 491.0	2 491.0	2 491.0	2 491.0	2 491.3
Kostanai	4 386.0	4 387.0	2 876.0	4 281.0	4 209.7
Kyzylorda	1 226.0	1 253.0	1 371.0	1 386.0	1 473.6
Mangystau	534.0	641.0	642.0	801.0	596.0
Ontustik Kazakhstan	1 720.0	1 558.0	1 466.0	-	-
Pavlodar	2 190.0	2 205.0	2 218.0	2 230.0	2 234.5
Soltustik Kazakhstan	3 230.0	3 230.0	3 230.0	3 230.0	3 230.0
Turkistan	-	-	-	1 466.0	1 466.3
Shygys Kazakhstan	4 662.0	4 702.0	4 696.0	4 686.0	4 670.0

3.9 Proportion of paved roads for public use in the total length*

in percentage					
	2015	2016	2017	2018	2019
Republic of Kazakhstan	89.3	90.3	85.8	86.5	88.7
Akmola	99.5	99.5	98.9	98.8	99.5
Aktobe	82.8	87.8	83.2	74.2	78.8
Almaty	98.5	98.5	99.4	91.9	98.2
Atyrau	72.8	73.3	73.4	75.5	73.4
Batys Kazakhstan	72.0	72.5	50.7	67.1	71.5
Zhambyl	97.1	98.9	99.9	99.7	99.7
Karagandy	98.6	98.6	94.8	95.2	99.6
Kostanai	84.7	84.8	66.8	82.5	83.6
Kyzylorda	83.6	83.7	83.2	83.5	89.1
Mangystau	93.6	92.0	88.6	88.6	84.8
Ontustik Kazakhstan	94.8	98.3	96.8	-	-
Pavlodar	86.1	89.1	88.1	88.6	89.5
Soltustik Kazakhstan	79.1	79.1	79.1	79.1	77.7
Turkistan	-	-	-	94.4	97.1
Shygys Kazakhstan	92.5	93.8	90.4	86.8	89.1

3.10 Density of paved roads for public use*

	km per 1000 square km				
	2015	2016	2017	2018	2019
Republic of Kazakhstan	31.7	31.9	30.0	30.5	31.1
Akmola	53.7	53.7	53.3	53.7	54.1
Aktobe	18.1	20.3	18.1	17.0	18.1
Almaty	41.0	41.1	39.8	39.5	42.2
Atyrau	18.7	18.9	18.9	20.2	18.9
Batys Kazakhstan	30.6	31.3	21.8	28.8	30.7
Zhambyl	36.0	35.8	35.3	29.9	29.9
Karagandy	20.4	20.4	19.6	19.7	20.4
Kostanai	40.2	40.2	31.6	39.2	39.6
Kyzylorda	12.4	12.5	12.7	12.8	13.4
Mangystau	14.6	15.0	14.5	15.2	14.5
Ontustik Kazakhstan	58.2	57.1	55.0	-	-
Pavlodar	39.0	38.9	38.5	38.6	39.3
Soltustik Kazakhstan	72.6	72.6	72.6	72.6	71.3
Turkistan	-	-	-	56.5	54.7
Shygyz Kazakhstan	39.3	39.4	38.2	36.6	37.7

3.11 Availability of motor vehicles in the country

	thousand units				
	2015 ¹⁾²⁾	2016 ¹⁾²⁾	2017 ¹⁾²⁾	2018 ¹⁾²⁾	2019 ¹⁾²⁾
Republic of Kazakhstan	4 397.3	4 383.1	4 382.6	4 342.1	4 325.3
Akmola	208.2	208.1	208.2	205.2	204.9
Aktobe	184.4	175.5	173.6	171.9	168.7
Almaty	519.7	530.8	534.1	539.3	557.6
Atyrau	140.9	137.6	137.4	137.1	134.8
Batys Kazakhstan	138.6	135.5	134.6	132.8	132.2
Zhambyl	216.1	232.5	222.0	221.9	226.8
Karagandy	318.7	319.4	319.5	320.9	319.5
Kostanai	206.5	205.1	203.3	199.5	198.8
Kyzylorda	136.4	136.0	135.4	136.2	136.8
Mangystau	168.7	164.6	162.7	163.9	161.7
Ontustik Kazakhstan	538.7	544.0	550.1	401.7	226.8
Pavlodar	189.2	183.3	180.8	177.2	177.1
Soltustik Kazakhstan	177.0	173.9	170.0	165.9	154.0
Turkistan	-	-	-	88.1	126.1
Shygyz Kazakhstan	352.2	348.5	342.0	339.6	335.6
Nur-Sultan city	275.5	273.0	280.5	288.5	300.4
Almaty city	511.2	500.3	504.4	509.6	514.7
Shymkent city	-	-	-	26.6	81.2

¹⁾ According to the Ministry of Internal Affairs of the Republic of Kazakhstan. The presence of cars for the years 2015-2018, data are given only for registered cars.

²⁾ The number of passenger cars, taking into account diplomatic numbers and numbers without specifying the region.

3.12 Availability of passenger vehicles, including from individual owners

	thousand units									
	2015 ¹⁾²⁾		2016 ¹⁾²⁾		2017 ¹⁾²⁾		2018 ¹⁾²⁾		2019 ¹⁾²⁾	
	total	of them belong to individual owners	total	of them belong to individual owners	total	of them belong to individual owners	total	of them belong to individual owners	total	of them belong to individual owners
Republic of Kazakhstan	3 856.5	3 641.1	3 845.3	3 635.0	3 851.6 ²⁾	3 639.1 ²⁾	3 848.0 ²⁾	3 637.0 ²⁾	3 776.9 ²⁾	3 568.2 ²⁾
Akmola	177.4	166.3	177.8	166.9	178.0	166.9	177.4	166.1	174.5	163.4
Aktobe	158.6	150.0	152.4	144.1	148.6	140.1	149.2	140.6	142.9	134.5
Almaty	459.5	447.9	471.0	459.8	474.3	463.0	483.0	471.5	493.5	481.9
Atyrau	118.3	110.9	115.8	108.4	114.3	106.7	114.5	107.0	110.4	103.1
Batys										
Kazakhstan	120.2	113.2	118.2	111.3	116.7	109.8	116.5	109.6	114.1	107.6
Zhambyl	186.8	181.2	190.9	185.2	194.0	188.2	195.7	189.9	198.5	192.7
Karagandy	285.1	273.1	283.4	271.8	283.3	271.4	287.2	275.4	282.4	271.1
Kostanai	179.0	168.0	175.1	164.3	172.1	161.2	171.5	160.3	166.2	155.3
Kyzylorda	109.8	103.6	110.1	104.1	110.1	104.0	112.6	106.7	112.4	106.5
Mangystau	142.2	134.7	139.1	131.8	137.5	130.3	140.3	133.2	136.5	129.6
Ontustik										
Kazakhstan	470.0	456.8	476.9	464.5	481.6	469.2	401.7	390.0	226.8	219.8
Pavlodar	161.9	153.6	157.7	149.5	155.7	147.4	154.4	146.3	152.2	144.3
Soltustik										
Kazakhstan	151.1	143.0	149.0	140.9	146.6	138.3	144.3	136.1	130.9	123.1
Turkistan	-	-	-	-	-	-	25.3	24.7	60.2	59.2
Shygy										
Kazakhstan	308.2	294.9	306.3	293.1	301.2	288.5	301.4	288.3	294.6	281.9
Nur-Sultan city	244.5	227.3	246.9	229.7	250.9	233.3	261.1	242.1	270.7	251.2
Almaty city	468.3	432.7	459.5	425.1	462.5	428.5	471.1	437.0	470.0	436.5
Shymkent city	-	-	-	-	-	-	24.7	24.1	72.4	70.6

¹⁾ According to the Ministry of Internal Affairs of the Republic of Kazakhstan. The presence of cars for the years 2015-2018, data are given only for registered cars.

²⁾ The number of passenger cars, taking into account diplomatic numbers and numbers without specifying the region.

3.13 Availability of registered passenger vehicles by type of fuel used¹⁾

	on January 1, 2020, units						
	Total	Including the type of fuel used					
		petrol	diesel fuel	gas balloon	mixed	electric	not specified
Republic of Kazakhstan²⁾	3 776.9 ²⁾	3 363.0	74.2	3.6	276.3	0.6	59.2
Akmola	174.5	159.5	2.3	0.1	7.2	0.0	5.4
Aktobe	142.9	104.5	1.0	0.3	35.6	0.0	1.5
Almaty	493.5	467.9	11.3	0.4	11.8	0.0	2.2
Atyrau	110.4	95.2	3.2	0.1	10.8	-	1.0
Batys Kazakhstan	114.1	98.9	2.8	0.0	11.5	0.0	0.9
Zhambyl	198.5	185.0	3.7	0.1	6.5	0.0	3.2
Karagandy	282.4	260.7	6.4	0.1	9.7	0.0	5.4
Kostanai	166.2	151.5	4.4	0.0	9.0	0.0	1.2

Continuation

	Total	Including the type of fuel used					
		petrol	diesel fuel	gas balloon	mixed	electric	not specified
Kyzylorda	112.4	96.3	1.2	0.2	14.5	0.0	0.3
Mangystau	136.5	58.6	2.0	0.1	73.8	0.0	2.0
Ontustik Kazakhstan	226.8	210.6	2.0	0.3	10.2	0.0	3.8
Pavlodar	152.2	143.5	1.0	0.1	4.9	0.0	2.7
Soltustik Kazakhstan	130.9	114.3	1.8	0.2	11.9	0.0	2.7
Turkistan	60.2	51.0	1.0	0.1	8.1	-	0.0
Shygys Kazakhstan	294.6	286.5	2.7	0.1	3.3	0.0	2.0
Nur-Sultan city	270.7	251.8	2.6	0.4	15.8	0.0	0.0
Almaty city	470.0	431.9	19.2	0.5	16.7	0.1	1.5
Shymkent city	72.4	63.5	1.2	0.2	7.5	-	0.0

¹⁾ Based on the vehicles of the Ministry of Internal Affairs of the Republic of Kazakhstan.²⁾ Taking into account diplomatic numbers and numbers without specifying the region.

Note: «electric» - using an electric battery; «mixed» - on gasoline and on electric fuel.

3.14 Availability of registered passenger vehicles by year of manufacture¹⁾

on January 1, 2020, units

	Total	Including by year of manufacture				
		no more than 3 years	more than 3 years, but not more than 7 years	more than 7 years, but not more than 10 years	more than 10 years	other
Republic of Kazakhstan²⁾	3 776.9 ²⁾	401.1	593.0	240.2	2 459.0	83.5
Akmola	174.5	15.0	21.8	10.1	123.8	3.8
Aktobe	142.9	18.5	31.0	10.2	79.4	3.8
Almaty	493.5	22.6	47.6	24.7	393.3	5.4
Atyrau	110.4	26.7	31.6	8.1	39.4	4.7
Batys Kazakhstan	114.1	17.6	22.3	7.9	63.1	3.1
Zhambyl	198.5	7.1	14.6	7.8	167.4	1.6
Karagandy	282.4	25.1	35.9	15.6	200.2	5.6
Kostanai	166.2	22.3	24.1	9.2	106.2	4.3
Kyzylorda	112.4	9.0	14.0	6.8	80.6	2.0
Mangystau	136.5	18.2	32.5	11.5	69.9	4.3
Ontustik Kazakhstan	226.8	15.3	28.1	13.0	164.9	5.4
Pavlodar	152.2	12.5	19.4	7.8	110.0	2.5
Soltustik Kazakhstan	130.9	12.0	13.5	7.4	94.9	3.1
Turkistan	60.2	3.3	10.9	4.0	42.0	-
Shygys Kazakhstan	294.6	15.4	46.8	12.6	217.3	2.4
Nur-Sultan city	270.7	55.9	69.1	20.4	115.6	9.7
Almaty city	470.0	71.6	89.7	43.8	250.2	14.8
Shymkent city	72.4	6.8	16.1	5.0	44.2	0.3

¹⁾ Based on the vehicles of the Ministry of Internal Affairs of the Republic of Kazakhstan.²⁾ Taking into account diplomatic numbers and numbers without specifying the region.

Note: "other" - the year of issue is not defined.

3.15 Provision of the population of cars in the personal property

	units per 100 resident population					
	2015	2016	2017	2018	2019	
Republic of Kazakhstan	20.8	20.4	20.2	19.9	19.2	
Akmola	22.5	22.6	22.7	22.5	22.2	
Aktobe	18.1	17.1	16.5	16.3	15.3	
Almaty	23.1	23.4	23.1	23.2	23.4	
Atyrau	18.9	18.0	17.4	17.1	16.0	
Batys Kazakhstan	17.9	17.4	17.0	16.9	16.4	
Zhambyl	16.4	16.6	16.9	16.9	17.0	
Karagandy	19.8	19.6	19.6	20.0	19.7	
Kostanai	19.0	18.6	18.4	18.3	17.9	
Kyzylorda	13.6	13.5	13.4	13.5	13.3	
Mangystau	21.8	20.8	20.0	19.9	18.5	
Ontustik Kazakhstan	16.2	16.2	16.2	-	-	
Pavlodar	20.3	19.7	19.5	19.4	19.2	
Soltustik Kazakhstan	25.1	24.9	24.7	24.5	22.4	
Turkistan	-	-	-	-	2.9	
Shygys Kazakhstan	21.1	21.0	20.8	20.9	20.6	
Nur-Sultan city	26.3	24.9	23.3	23.0	22.1	
Almaty city	25.9	24.6	24.1	23.9	22.8	
Shymkent city	-	-	-	-	6.8	

3.16 Availability of buses, including individual owners*

	units									
	2015		2016		2017		2018		2019	
	total	of them belong to individual owners	total	of them belong to individual owners	total	of them belong to individual owners	total	of them belong to individual owners	total	of them belong to individual owners
Republic of Kazakhstan	97 688	56 909	98 652	57 325	90 430	51 085	89 291	...	86 613	46 633
Akmola	3 619	1 534	3 623	1 589	3 305	1 346	3 258	...	3 158	1 209
Aktobe	4 046	1 781	3 704	1 974	3 573	1 542	3 567	...	3 400	1 461
Almaty	8 767	6 318	8 723	6 380	7 896	5 692	7 814	...	7 589	5 359
Atyrau	5 697	2 893	5 454	2 639	5 630	2 737	5 751	...	5 535	2 451
Batys Kazakhstan	4 236	2 272	4 054	1 550	3 833	1 938	3 791	...	3 582	1 728
Zhambyl	5 262	3 634	7 765	6 153	4 747	3 329	4 651	...	4 404	3 043
Karagandy	5 851	2 596	6 388	2 010	6 066	2 622	5 936	...	5 823	2 433
Kostanai	3 234	1 548	3 597	1 639	3 391	1 481	3 310	...	3 135	1 221
Kyzylorda	5 500	4 383	5 499	4 547	5 083	3 999	5 061	...	4 690	3 630
Mangystau	5 140	2 921	5 085	2 897	4 730	2 668	4 690	...	4 456	2 477
Ontustik Kazakhstan	16 079	13 310	15 869	13 446	14 777	12 246	-	...	-	-
Pavlodar	5 258	2 444	4 954	2 147	4 598	2 029	4 423	...	4 218	1 814
Soltustik Kazakhstan	2 673	1 200	2 649	1 519	2 292	971	2 253	...	2 135	866
Turkistan	-	-	-	-	-	-	13 964	...	12 457	10 373
Shygys Kazakhstan	7 012	3 992	6 931	4 049	6 318	3 627	6 182	...	5 950	3 030

Continuation

	2015		2016		2017		2018		2019	
	total	of them belong to individual owners	total	of them belong to individual owners	total	of them belong to individual owners	total	of them belong to individual owners	total	of them belong to individual owners
Nur-Sultan city	5 987	2 485	5 299	2 122	5 758	2 077	5 680	...	5 421	1 869
Almaty city	9 327	3 598	9 058	2 664	8 433	2 781	8 315	...	8 758	2 550
Shymkent city	-	-	-	-	-	-	645	...	1 902	1 119

* Hereinafter, the data of the Ministry of Internal Affairs of the Republic of Kazakhstan (Tables 3.16-3.17).

3.17 Availability of freight vehicles, including individual owners*

units

	2015		2016		2017		2018		2019	
	total	of them belong to individual owners	total	of them belong to individual owners	total	of them belong to individual owners	total	of them belong to individual owners	total	
Republic of Kazakhstan	443 161	266 543	439 167	275 722	440 612	269 056	404 848	...	461 780	290 420
Akmola	27 164	15 835	26 679	17 322	26 829	16 058	24 535	...	27 266	16 561
Aktobe	21 693	11 062	19 321	14 134	21 425	11 454	19 132	...	22 423	12 978
Almaty	51 456	38 778	51 010	31 434	51 862	40 291	48 489	...	56 505	45 113
Atyrau	16 894	8 677	16 381	11 810	17 466	8 628	16 878	...	18 817	9 461
Batys Kazakhstan	14 194	7 734	13 183	8 969	14 071	7 734	12 524	...	14 537	8 198
Zhambyl	24 115	18 199	33 844	21 373	23 189	17 917	21 536	...	23 823	18 723
Karagandy	27 817	15 354	29 571	16 788	30 171	17 501	27 726	...	31 270	18 762
Kostanai	24 215	13 824	26 321	15 467	27 729	15 337	24 713	...	29 522	17 189
Kyzylorda	21 071	13 252	20 362	12 497	20 194	12 921	18 510	...	19 716	12 789
Mangystau	21 347	11 017	20 403	12 244	20 497	10 482	18 980	...	20 719	10 413
Ontustik Kazakhstan	52 572	40 113	51 298	32 341	53 778	41 758	-	...	-	-
Pavlodar	22 002	12 252	20 615	13 074	20 554	11 622	18 438	...	20 705	12 168
Soltustik Kazakhstan	23 149	13 945	22 286	15 372	21 130	12 571	19 297	...	20 936	12 388
Turkistan	-	-	-	-	-	-	48 851	...	53 447	42 736
Shygys Kazakhstan	36 955	22 546	35 328	20 742	34 409	21 815	32 058	...	35 031	22 672
Nur-Sultan city	24 987	10 936	20 874	12 921	23 853	10 615	21 742	...	24 244	10 987
Almaty city	33 530	13 019	31 691	19 234	33 455	12 352	30 195	...	35 988	13 720
Shymkent city	-	-	-	-	-	-	1 244	...	6 831	5 562

3.18 Carried (transported) goods, luggage, cargo-luggage by automobile transport

million tons

	2015	2016	2017	2018	2019
Republic of Kazakhstan	3 174.0	3 180.7	3 322.3	x	3 550.5
Akmola	120.3	113.1	116.1	126.5	130.0
Aktobe	70.1	76.3	76.8	79.1	83.0
Almaty	167.2	179.0	181.1	184.6	197.1
Atyrau	75.7	75.0	75.9	x	61.5
Batys Kazakhstan	39.5	39.4	39.3	39.5	40.0

					Continuation
	2015	2016	2017	2018	2019
Zhambyl	91.3	91.3	100.1	103.9	103.4
Karagandy	709.9	727.5	795.5	821.2	864.6
Kostanai	294.9	277.3	291.5	297.1	320.1
Kyzylorda	108.7	104.3	104.6	104.7	107.0
Mangystau	225.3	216.4	236.5	x	232.2
Ontustik Kazakhstan	155.0	158.7	x	-	-
Pavlodar	93.6	97.7	88.6	x	88.7
Soltustik Kazakhstan	49.7	48.2	51.4	51.5	52.3
Turkistan	-	-	-	71.0	86.0
Shygys Kazakhstan	598.3	581.9	600.2	631.1	660.9
Nur-Sultan city	142.5	142.6	x	154.2	155.1
Almaty city	232.1	252.2	254.5	247.0	257.4
Shymkent city	-	-	-	x	111.2

3.19 Freight turnover of automobile transport

					million tkm
	2015	2016	2017	2018	2019
Republic of Kazakhstan	161 864.7	163 262.7	166 146.1	185 197.3	173 468.2
Akmola	5 010.5	4 992.6	5 265.2	5 428.2	5 464.9
Aktobe	6 114.9	6 126.1	6 409.3	6 423.7	6 578.2
Almaty	7 480.9	8 042.2	7 887.7	8 019.6	8 227.6
Atyrau	18 933.9	15 511.7	12 850.4	x	20 107.5
Batys Kazakhstan	2 721.7	2 906.0	3 099.6	3 095.5	3 518.7
Zhambyl	2 733.4	2 735.1	2 961.0	2 905.6	2 986.6
Karagandy	9 871.5	10 355.1	10 843.1	10 362.4	10 592.1
Kostanai	10 701.1	10 527.5	11 413.7	11 593.4	12 210.2
Kyzylorda	14 123.2	13 877.6	13 905.2	14 261.3	14 650.1
Mangystau	7 252.5	6 484.2	6 935.9	x	7 827.9
Ontustik Kazakhstan	9 115.5	9 101.5	x	-	-
Pavlodar	18 083.5	19 661.5	19 029.3	19 419.0	19 596.1
Soltustik Kazakhstan	3 345.0	3 445.9	3 712.2	3 758.3	3 762.1
Turkistan	-	-	-	2 265.0	3 254.8
Shygys Kazakhstan	14 478.9	15 220.2	16 078.6	16 088.4	16 158.0
Nur-Sultan city	10 403.9	10 570.7	x	10 169.3	10 408.2
Almaty city	21 494.5	23 704.6	27 482.8	37 703.3	20 725.4
Shymkent city	-	-	-	x	7 399.6

3.20 Passengers transported by automobile transport*

					million people
	2015	2016	2017	2018	2019
Republic of Kazakhstan	21 744.7	22 239.4	22 643.6	22 911.5	23 719.2
Akmola	1 729.5	1 700.1	1 643.9	x	1 744.9
Aktobe	264.7	278.4	x	x	319.2
Almaty	706.7	808.3	873.0	882.2	937.8
Atyrau	172.0	181.0	x	x	195.2
Batys Kazakhstan	436.0	433.6	x	424.5	428.7
Zhambyl	929.5	957.3	957.3	987.4	1 056.3
Karagandy	2 411.6	2 408.5	2 388.8	2 414.0	2 464.2

Continuation					
	2015	2016	2017	2018	2019
Kostanai	1 745.2	1 751.7	1 796.6	1 805.6	1 868.6
Kyzylorda	298.1	335.5	x	397.4	405.8
Mangystau	85.3	84.8	88.8	89.2	90.4
Ontustik Kazakhstan	2 346.1	2 477.2	2 605.6	-	-
Pavlodar	1 225.1	1 227.8	1 208.6	1 218.6	1 222.3
Soltustik Kazakhstan	495.2	506.8	501.6	x	508.7
Turkistan	-	-	-	820.6	997.9
Shygys Kazakhstan	1 673.3	1 699.6	1 704.1	1 712.0	1 710.3
Nur-Sultan city	2 279.0	2 441.0	2 528.5	2 553.7	2 574.1
Almaty city	4 947.5	4 947.9	x	5 154.8	5 529.4
Shymkent city	-	-	-	1 805.9	1 665.2

* Hereinafter, the data excludes urban electric transport (Tables 3.20-3.21).

3.21 Passenger turnover of automobile transport*

million pkm					
	2015	2016	2017	2018	2019
Republic of Kazakhstan	222 717.2	237 194.0	240 073.7	247 473.6	260 379.5
Akmola	7 274.9	7 278.0	7 281.8	x	7 421.1
Aktobe	14 153.9	14 911.6	x	x	17 478.6
Almaty	12 313.2	14 093.4	14 362.9	14 942.1	16 081.4
Atyrau	1 228.0	1 392.9	x	x	1 833.5
Batys Kazakhstan	7 350.7	7 347.4	x	7 799.8	8 120.6
Zhambyl	6 755.5	7 838.6	7 859.4	7 904.0	8 244.3
Karagandy	36 957.7	38 535.2	38 568.1	x	43 001.3
Kostanai	16 886.1	17 412.1	17 951.4	18 143.2	18 139.3
Kyzylorda	5 580.8	5 991.7	x	6 982.0	6 994.8
Mangystau	4 137.0	4 322.9	4 698.4	4 739.8	4 776.9
Ontustik Kazakhstan	14 985.3	18 381.0	18 598.1	-	-
Pavlodar	23 859.8	25 061.1	26 602.7	26 659.3	26 683.0
Soltustik Kazakhstan	3 925.3	3 917.7	3 924.4	x	3 954.0
Turkistan	-	-	-	3 642.2	4 759.4
Shygys Kazakhstan	21 251.7	22 158.7	22 247.2	x	24 496.3
Nur-Sultan city	18 364.6	18 817.9	18 901.0	x	20 970.3
Almaty city	27 692.7	29 733.8	x	29 368.6	33 207.8
Shymkent city	-	-	-	15 083.2	14 216.8

3.22 Passengers transported by buses

million people					
	2015	2016	2017	2018	2019
Republic of Kazakhstan	17 920.0	18 314.4	18 237.5	16 538.2	17 532.1
Akmola	1 699.0	1 700.1	1 643.9	x	1 718.8
Aktobe	207.2	211.4	x	x	214.4
Almaty	578.7	647.1	629.0	664.5	758.1
Atyrau	134.3	140.8	x	x	154.4
Batys Kazakhstan	347.6	346.3	x	381.7	395.2
Zhambyl	728.7	735.6	740.2	644.0	689.1
Karagandy	2 044.6	2 035.3	1 817.0	1 446.4	1 429.4
Kostanai	1 401.7	1 377.1	1 502.4	1 621.7	1 816.6

Continuation

	2015	2016	2017	2018	2019
Kyzylorda	246.6	281.9	x	397.4	385.5
Mangystau	73.1	69.9	63.2	45.9	45.5
Ontustik Kazakhstan	1 843.0	1 969.3	1 959.0	-	-
Pavlodar	991.7	972.4	979.2	988.2	1 097.0
Soltustik Kazakhstan	439.7	506.8	389.3	x	459.9
Turkistan	-	-	-	605.5	836.2
Shygys Kazakhstan	1 352.6	1 378.2	1 429.5	1 215.6	1 124.2
Nur-Sultan city	1 919.1	2 103.9	2 294.2	2 374.4	2 241.3
Almaty city	3 912.5	3 838.1	x	x	2 779.9
Shymkent city	-	-	-	1 481.4	1 386.7

3.23 Passenger turnover of buses

million pkm

	2015	2016	2017	2018	2019
Republic of Kazakhstan	182 678.7	194 497.3	182 064.9	176 966.1	181 192.9
Akmola	7 153.8	7 278.0	7 281.8	x	7 121.1
Aktobe	11 276.5	11 176.4	x	x	8 998.0
Almaty	9 817.0	11 413.8	10 666.3	x	8 661.2
Atyrau	970.9	1 110.1	x	x	1 635.1
Batys Kazakhstan	6 014.4	5 973.3	x	5 021.7	3 624.6
Zhambyl	5 310.9	6 090.2	5 344.1	5 735.0	5 941.9
Karagandy	30 866.4	32 862.1	33 639.9	x	36 587.7
Kostanai	13 635.8	13 627.8	15 737.2	17 519.6	17 809.7
Kyzylorda	4 640.8	5 083.7	x	6 982.0	6 887.7
Mangystau	3 448.2	3 755.8	4 344.1	4 706.0	4 753.3
Ontustik Kazakhstan	11 821.8	14 765.7	16 045.1	-	-
Pavlodar	19 321.7	19 988.0	15 942.9	18 857.5	20 124.2
Soltustik Kazakhstan	3 507.2	3 917.7	3 349.9	x	3 314.8
Turkistan	-	-	-	2 875.4	4 272.4
Shygys Kazakhstan	17 550.8	18 022.6	17 086.7	x	14 299.6
Nur-Sultan city	15 611.9	16 054.1	14 608.4	x	10 785.6
Almaty city	21 730.6	23 377.9	x	x	12 796.9
Shymkent city	-	-	-	13 933.5	13 579.1

3.24 Average distance of transportation of 1 ton of cargo and average distance of transportation of 1 passenger

	Average transportation distance of 1 ton of cargo, km					Average distance of transportation of 1 passenger				
	2015	2016	2017	2018	2019	2015	2016	2017	2018	2019
Republic of Kazakhstan	51.0	51.3	50.0	54.1	48.9	10.2	10.7	10.6	10.8	11.0
Akmola	41.7	44.1	45.4	42.9	42.1	4.2	4.3	4.4	4.5	4.3
Aktobe	87.2	80.3	83.5	81.2	79.3	53.5	53.6	54.2	53.5	54.9
Almaty	44.7	44.9	43.6	43.5	41.7	17.4	17.4	16.5	16.9	17.1
Atyrau	250.1	206.8	169.3	317.0	327.1	7.1	7.7	7.8	9.5	9.4
Batys Kazakhstan	68.9	73.8	78.9	78.5	88.1	16.9	16.9	16.2	18.4	18.9
Zhambyl	29.9	30.0	29.6	28.0	28.9	7.3	8.2	8.2	8.0	7.8
Karagandy	13.9	14.2	13.6	12.6	12.3	15.3	16.0	16.1	16.6	17.4
Kostanai	36.3	38.0	39.2	39.0	38.1	9.7	9.9	10.0	10.0	9.7

Continuation

	Average transportation distance of 1 ton of cargo, km					Average distance of transportation of 1 passenger				
	2015	2016	2017	2018	2019	2015	2016	2017	2018	2019
Kyzylorda	129.9	133.1	132.9	136.2	136.9	18.7	17.9	17.8	17.6	17.2
Mangystau	32.2	30.0	29.3	30.0	33.7	48.5	51.0	52.9	53.1	52.9
Ontustik Kazakhstan	58.8	57.4	57.5	-	-	6.4	7.4	7.1	-	-
Pavlodar	193.2	201.2	214.8	199.3	220.9	19.5	20.4	22.0	21.9	21.6
Soltustik Kazakhstan	67.3	71.5	72.2	73.0	71.9	7.9	7.7	7.8	7.8	7.8
Turkistan	-	-	-	31.9	37.8	-	-	-	4.4	4.8
Shygys Kazakhstan	24.2	26.2	26.8	25.5	24.4	12.7	13.0	13.1	13.3	14.3
Nur-Sultan city	73.0	74.1	60.4	66.0	67.1	8.1	7.7	7.5	7.8	8.1
Almaty city	92.6	94.0	108.0	152.6	80.5	5.6	6.0	5.5	5.7	6.0
Shymkent city	-	-	-	65.1	66.6	-	-	-	8.4	8.5

3.25 Main indicators of road transport by types of communication

	2015	2016	2017	2018	2019
Carried (transported) cargo, baggage, cargo-luggage, thousand tons*	3 174 021.8	3 180 655.7	3 322 267.3	x	3 550 471.3
including by types of communication:					
International	906.6	904.1	3 323.2	1 340.2	3 909.7
to CIS countries	730.4	-	-	-	-
to non-CIS countries	176.2	-	-	-	-
transit	-	19.0	61.4	146.8	285.6
export	-	-	441.4	345.0	398.6
EAEU countries	-	-	273.7	228.6	294.3
non-EAEU countries	-	-	167.7	116.4	104.4
import	-	-	2 820.4	848.4	3 225.4
EAEU countries	-	-	2 648.1	642.9	3 066.2
non-EAEU countries	-	-	172.3	205.5	159.1
Intrarepublican	20 619.5	23 316.2	18 234.4	22 193.1	21 711.0
Suburban	14 774.5	10 737.8	x	x	95 053.8
Urban	41 352.8	48 047.0	x	43 363.0	45 657.6
Cargo handling, mln. tkm*	161 864.7	163 262.7	166 146.1	185 197.3	173 468.2
including by types of communication:					
International	2 143.6	2 479.6	5 118.2	5 089.7	4 924.3
CIS countries	1 613.4	-	-	-	-
non-cis countries	530.2	-	-	-	-
transit	-	61.4	142.3	705.1	412.7
export	-	-	1 412.1	2 350.8	1 256.1
EAEU countries	-	-	1 081.1	1 692.3	676.0
non-EAEU countries	-	-	331.0	658.5	580.1
import	-	-	3 563.8	2 033.8	3 255.6
EAEU countries	-	-	3 077.3	1 406.8	2 685.2
non-EAEU countries	-	-	486.4	627.0	570.4
Intra-Republican	3 440.3	4 179.8	x	13 320.7	6 332.0
Suburban	1 204.3	747.0	963.9	823.1	1 577.5
Urban	3 000.4	3 738.6	x	3 674.4	1 378.3
Transported passengers million people*	21 810.7	22 303.6	22 714.4	22 982.2	23 804.7
including by types of communication:					
International	3.6	1.2	x	x	4.2

Continuation					
	2015	2016	2017	2018	2019
CIS countries	3.6	-	-	-	-
non-cis countries	-	-	-	-	-
Intrarepublican	20.4	18.4	19.6	20.8	20.5
intraregional	17.5	15.6	16.4	17.6	16.5
interregional	2.9	2.8	3.2	3.1	4.0
Suburban	60.7	66.6	x	x	70.1
Urban	1 359.1	1 302.4	1 329.6	1 303.8	1 270.6
Passenger traffic, mln. pkm*	223 085.6	237 556.1	240 586.9	247 931.2	260 909.1
including by types of communication:					
International	583.1	399.7	x	x	655.8
CIS countries	571.5	-	-	-	-
non-cis countries	11.6	-	-	-	-
Intrarepublican	2 479.0	2 270.5	2 424.2	2 655.1	2 809.2
intraregional	1 749.6	1 579.4	1 558.1	1 734.9	1 753.4
interregional	729.4	691.1	866.2	920.2	1 055.8
Suburban	1 495.8	2 601.2	x	x	1 686.2
Urban	15 086.9	14 933.7	14 327.5	16 736.3	20 387.7

* Data are based on the evaluation of work performed by individual entrepreneurs engaged in commercial transportation.

3.26 Transported goods by automobile transport for certain types of goods

thousand tons					
	2015	2016	2017	2018	2019
Carried (transported) cargo, baggage, cargo-luggage	77 653.4	83 005.1	x	131 308.2	166 332.1
including by type of cargo:					
raw oil	4 348.3	2 910.6	2 374.5	2 208.9	2 139.1
oil products	432.1	487.4	859.4	1 080.9	1 095.0
natural gas	x	-	-	x	x
liquid or gaseous loads in weight	63.1	85.1	96.5	86.0	53.4
other water or gas loads in weight	936.9	775.0	x	475.8	471.0
coal	5 387.2	7 782.8	33 671.0	59 984.8	76 746.9
coke	-	0.2	x	-	-
iron ore	367.9	605.5	64.7	793.4	1 166.8
manganese ore	-	-	60.2	x	x
non-ferrous metal ores	9 830.1	9 855.3	5 729.4	4 802.3	9 211.1
sulfur raw materials	231.4	780.5	x	1 127.7	1 358.8
black metals	1 097.1	1 043.8	1 078.8	1 403.1	3 366.6
ferrous scrap	18.3	7.6	655.2	308.3	247.9
fluxes	x	0.1	6.0	-	-
timber load	1.8	10.6	9.3	7.4	9.7
construction cargo	20 814.0	26 437.9	20 476.7	19 291.0	19 480.0
chemical and mineral fertilizers	157.5	365.9	17.9	54.5	65.9
corn	1 165.1	981.5	980.5	708.8	607.5
chilled or chilled foods	101.8	184.7	220.6	186.9	185.0
post office	1.6	0.8	8.1	39.5	12.1
furniture	10.7	12.1	16.9	10.3	19.6
vegetable products	24.8	51.0	25.5	38.9	156.0
building cement	134.8	373.2	166.3	244.2	6 601.8
grain cargo	-	-	2.3	13.1	17.1

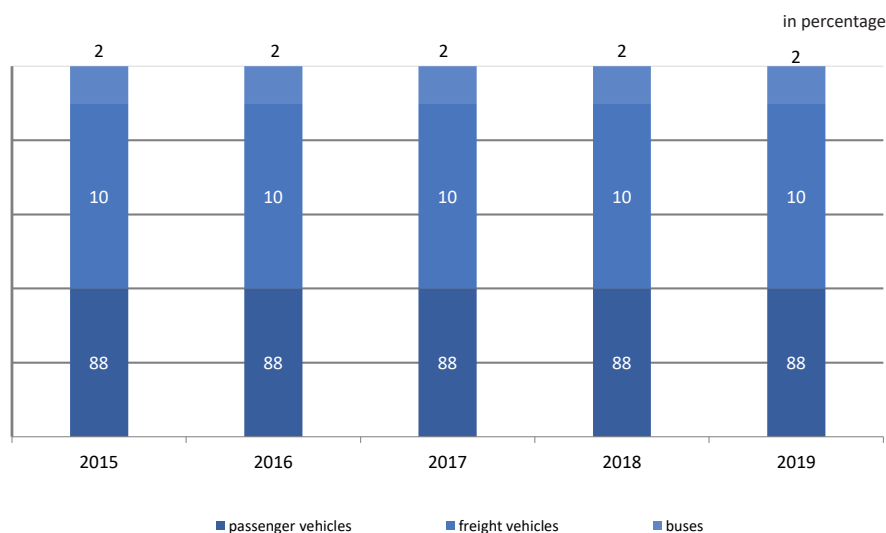
Continuation

	2015	2016	2017	2018	2019
other goods	32 528.6	30 253.6	45 441.6	38 436.3	43 307.5
of total					
transportation of dangerous goods	1 421.6	2 953.3	5 903.3	x	3 957.4
transportation of goods in containers	445.0	761.7	278.7	452.3	629.4

3.27 Traffic intensity on public roads per 1 km of roads

	Freight turnover mln. tkm					Passenger turnover, mln. pkm				
	2015	2016	2017	2018	2019	2015	2016	2017	2018	2019
Republic of Kazakhstan	1.7	1.7	1.7	1.9	1.8	2.3	2.5	2.5	2.6	2.7
Akmola	0.6	0.6	0.7	0.7	0.7	0.9	0.9	0.9	0.9	0.9
Aktobe	0.9	0.9	1.0	0.9	1.0	2.2	2.1	2.5	2.4	2.5
Almaty	0.8	0.9	0.9	0.8	0.9	1.3	1.5	1.6	1.6	1.7
Atyrau	6.2	5.1	4.2	6.0	6.6	0.4	0.5	0.5	0.5	0.6
Batys Kazakhstan	0.4	0.4	0.5	0.5	0.5	1.1	1.1	1.1	1.2	1.2
Zhambyl	0.5	0.5	0.6	0.7	0.7	1.3	1.5	1.5	1.8	1.9
Karagandy	1.1	1.2	1.2	1.2	1.2	4.2	4.4	4.4	4.5	4.9
Kostanai	1.2	1.1	1.2	1.2	1.3	1.8	1.9	1.9	2.0	2.0
Kyzylorda	4.2	4.1	4.0	4.1	4.3	1.7	1.8	1.9	2.0	2.1
Mangystau	2.8	2.4	2.6	2.5	2.8	1.6	1.6	1.7	1.7	1.7
Ontustik Kazakhstan	1.3	1.3	1.4	-	-	2.1	2.7	2.8	-	-
Pavlodar	3.2	3.6	3.5	3.6	3.6	4.2	4.6	4.9	0.7	4.9
Soltustik Kazakhstan	0.4	0.4	0.4	0.4	0.4	0.4	0.4	0.4	0.4	0.4
Turkistan	-	-	-	0.3	0.5	-	-	-	3.3	0.7
Shygyz Kazakhstan	1.2	1.3	1.3	1.3	1.3	1.8	1.9	1.9	1.7	2.0

Proportion of certain types of road transport in the general park



3.28 Traffic accidents on automobile transport*

	2015	2016	2017	2018	2019
Number of accidents - total, units	18 890	17 974	17 019	15 771	16 614
Number of died - total, people	2 453	2 390	2 086	2 096	1 947
Number of injured – total, people	24 055	23 389	22 256	20 445	15 420

* Hereinafter, the data of the Committee on Legal Statistics and Special Accounts of the General Prosecutor's Office of the Republic of Kazakhstan (tables 3.28-3.37).

3.29 Traffic accidents on the roads*

	Number of accidents, units					Number of died, people				
	2015	2016	2017	2018	2019	2015	2016	2017	2018	2019
Republic of Kazakhstan	18 890	17 974	17 019	15 771	16 614	2 453	2 390	2 086	2 096	2 405
Akmola	512	510	579	562	760	99	114	135	94	105
Aktobe	831	699	639	640	870	103	71	76	95	110
Almaty	1 694	2 086	1 934	2 257	2 372	463	505	394	385	503
Atyrau	410	333	285	268	307	79	70	54	74	65
Batys Kazakhstan	503	448	405	385	394	99	92	99	111	125
Zhambyl	1 298	1 387	1 386	1 272	1 223	243	210	166	144	183
Karagandy	871	797	730	543	540	173	145	139	186	179
Kostanai	613	444	443	413	388	105	64	71	69	60
Kyzylorda	381	378	374	446	581	89	92	88	99	135
Mangystau	410	336	328	320	312	79	99	87	83	70
Ontustik Kazakhstan	2 251	2 076	1 961	-	-	390	431	343	-	-
Pavlodar	1 032	880	872	843	779	92	76	57	68	69
Soltustik Kazakhstan	255	227	189	180	269	45	44	39	55	30
Turkistan	-	-	-	1 109	1 141	-	-	-	258	343
Shygyz Kazakhstan	1 583	1 462	1 208	1 138	1 302	178	179	142	130	154
Nur-Sultan city	694	708	583	527	563	57	42	60	34	36
Almaty city	5 552	5 203	5 103	4 500	4 489	159	156	136	133	161
Shymkent city	-	-	-	368	324	-	-	-	78	77

Continuation

	Number of injured, people				
	2015	2016	2017	2018	2019
Republic of Kazakhstan	24 055	23 389	22 256	20 445	22 180
Akmola	764	796	889	800	1 098
Aktobe	1 046	823	820	796	1 173
Almaty	2 158	2 820	2 632	3 213	3 381
Atyrau	487	426	328	323	424
Batys Kazakhstan	642	546	534	449	546
Zhambyl	2 002	2 253	2 240	1 977	1 959
Karagandy	1 112	945	921	665	653
Kostanai	772	612	548	488	486
Kyzylorda	466	445	454	553	677
Mangystau	518	423	413	404	564
Ontustik Kazakhstan	3 053	2 836	2 785	-	-
Pavlodar	1 359	1 217	1 189	1 179	1 144
Soltustik Kazakhstan	314	284	233	242	358
Turkistan	-	-	-	1 498	1 479
Shygyz Kazakhstan	2 042	1 955	1 587	1 511	1 827

Continuation

	Number of injured, people				
	2015	2016	2017	2018	2019
Nur-Sultan city	761	777	624	559	694
Almaty city	6 559	6 231	6 059	5 352	5 308
Shymkent city	-	-	-	436	409

3.30 Number of road accidents on the roads by type*

units

	2015		2016		2017		2018		2019	
	total	as a percentage of the total number of accidents	total	as a percentage of the total number of accidents	total	as a percentage of the total number of accidents	total	as a percentage of the total number of accidents	total	as a percentage of the total number of accidents
The number of traffic accidents										
- total	18 890	100.0	17 974	100.0	17 019	100.0	15 771	100.0	16 614	100.0
including:										
hitting a pedestrian	8 175	43.3	7 801	43.4	7 404	43.5	6 679	42.3	6 973	42.0
vehicle collision	6 522	34.5	5 636	31.4	6 009	35.3	5 653	35.8	5 903	35.5
hitting an obstacle	916	4.8	734	4.1	747	4.4	764	4.8	808	4.9
due to tipping	1 673	8.9	1 274	7.1	1 340	7.9	1 278	8.1	1 360	8.2
due to the fall of the passenger	589	3.1	599	3.3	568	3.3	489	3.1	549	3.3
hit on standing vehicles	291	1.5	255	1.4	287	1.7	249	1.6	257	1.5
hitting animals	104	0.6	115	0.6	126	0.7	142	0.9	156	0.9
hitting cyclists	396	2.1	337	1.9	335	2.0	283	1.8	314	1.9
other types of accidents	224	1.2	1 223	6.8	203	1.2	234	1.6	294	1.8

3.31 Number of road accidents by type in 2019*

units

	Total	Including by types								
		hitting a pedestrian	vehicle collision	hitting an obstacle	due to tipping	due to the fall of the passenger	hit on standing vehicles	hitting animals	hitting cyclists	other types of accidents
Republic of Kazakhstan	16 614	6 973	5 903	808	1 360	549	257	156	314	294
Akmola	760	205	344	50	96	2	22	12	3	26
Aktobe	870	324	348	30	106	25	6	8	9	14
Almaty	2 372	969	838	192	250	7	35	26	35	20
Atyrau	307	91	135	9	52	-	2	7	7	4
Batys Kazakhstan	394	142	157	13	43	2	5	14	17	1

Continuation

	Total	Including by types								other types of accidents
		hitting a pedestrian	vehicle collision	hitting an obstacle	due to tipping	due to the fall of the passenger	hit on standing vehicles	hitting animals	hitting cyclists	
Zhambyl	1 223	397	493	72	169	8	19	18	23	24
Karagandy	540	208	200	26	73	8	5	4	7	9
Kostanai	388	168	144	12	39	2	8	1	9	5
Kyzylorda	581	240	190	15	61	7	4	8	21	35
Mangystau	312	127	104	10	59	-	-	10	1	1
Pavlodar	779	280	324	50	70	3	16	13	10	13
Soltustik Kazakhstan	269	104	101	5	40	1	2	6	4	6
Turkistan	1 141	479	404	49	142	2	12	18	13	22
Shygys Kazakhstan	1 302	500	454	56	134	85	23	7	20	23
Nur-Sultan city	563	286	222	24	3	6	12	-	9	1
Almaty city	4 489	2 251	1 362	184	18	386	86	4	126	72
Shymkent city	324	202	83	11	5	5	-	-	-	18

3.32 Number of road traffic accidents caused by drivers*

units

	Number of accidents caused by drivers				
	2015	2016	2017	2018	2019
Republic of Kazakhstan	17 982	14 784	13 833	13 241	13 857
Akmola	618	433	497	474	686
Aktobe	823	695	567	564	739
Almaty	1 549	1 788	1 673	2 051	2 000
Atyrau	408	332	277	260	301
Batys Kazakhstan	442	421	374	351	346
Zhambyl	1 245	1 342	1 242	1 180	1 163
Karagandy	769	676	619	449	487
Kostanai	549	361	381	368	343
Kyzylorda	346	357	362	431	557
Mangystau	405	335	311	313	304
Ontustik Kazakhstan	2 243	1 682	1 673	-	-
Pavlodar	955	814	664	628	730
Soltustik Kazakhstan	213	184	141	146	227
Turkistan	-	-	-	1 040	1 087
Shygys Kazakhstan	1 448	1 192	1 021	973	1 061
Nur-Sultan city	542	544	432	374	409
Almaty city	5 427	3 628	3 599	3 325	3 104
Shymkent city	-	-	-	314	313

3.33 Road accidents per 100,000 people of the population of the Republic of Kazakhstan*

	units				
	2015	2016	2017	2018	2019
Republic of Kazakhstan	108	102	94	86	90
Akmola	69	69	79	76	103
Aktobe	100	84	75	74	99
Almaty	88	108	97	111	116
Atyrau	70	57	46	43	48
Batys Kazakhstan	79	71	63	59	60
Zhambyl	117	126	124	113	108
Karagandy	63	58	53	39	39
Kostanai	69	50	50	47	45
Kyzylorda	50	50	48	57	73
Mangystau	66	54	50	48	45
Ontustik Kazakhstan	80	74	68	-	-
Pavlodar	136	116	115	112	103
Soltustik Kazakhstan	45	40	34	32	49
Turkistan	-	-	-	56	57
Shygys Kazakhstan	113	105	87	82	95
Nur-Sultan city	80	82	58	50	51
Almaty city	332	311	287	246	238
Shymkent city	-	-	-	38	32

3.34 Causes of road traffic accidents*

	2015		2016		2017		2018		2019	
	total	as a percent- age of the total number of ac- cidents	total	as a percent- age of the total number of ac- cidents	total	as a percent- age of the total number of ac- cidents	total	as a percent- age of the total number of ac- cidents	total	as a percent- age of the total number of ac- cidents
Number of traffic accidents - total, units	18 890	100	17 974	100	17 019	100	15 771	100	16 614	100.0
Including for a reason:										
over speed	6 138	32.5	5 646	31.4	4 927	28.9	4 520	28.7	4 718	29.9
when traveling	1 685	8.9	2 075	11.5	2 312	13.6	2 288	14.5
pedestrian cross-ings	1 211	6.4	927	5.2	647	3.8	469	3	621	3.9
departure to the strip	773	4.1	667	3.7	682	4	612	3.9	669	4.2
oncoming traffic	609	3.2	412	2.3	374	2.2	334	2.1	340	2.2
pedestrian crossing	8 474	44.9	8 247	45.9	8 077	47.5	7 548	47.9

3.35 Causes of road accidents by region*

	Total					Including									
						over speed					at pedestrian crossings				
						2015	2016	2017	2018	2019	2015	2016	2017	2018	2019
Republic of Kazakhstan	18 890	17 974	17 019	15 771	16 614	6 138	5 646	4 927	4 520	4 718	1 685	2 075	2 312	2 288	...
Akmola	512	510	579	562	760	92	119	111	95	139	18	25	49	31	...
Aktobe	831	699	639	640	870	380	280	246	198	329	133	3	121	118	...
Almaty	1 694	2 086	1 934	2 257	2 372	611	623	647	787	652	133	204	201	318	...
Atyrau	410	333	285	268	307	135	142	69	61	31	34	41	43	59	...
Batys Kazakhstan	503	448	405	385	394	157	146	75	140	93	77	0	114	63	...
Zhambyl	1 298	1 387	1 386	1 272	1 223	375	368	373	293	282	61	74	119	51	...
Karagandy	871	797	730	543	540	251	230	204	153	196	52	91	102	81	...
Kostanai	613	444	443	413	388	95	50	57	49	44	116	117	118	118	...
Kyzylorda	381	378	374	446	581	50	26	41	33	43	11	72	87	137	...
Mangystau	410	336	328	320	312	173	111	76	19	9	66	98	129	143	...
Ontustik Kazakhstan	2 251	2 076	1 961	-	-	1 295	1 260	1 168	-	-	27	16	30	-	...
Pavlodar	1 032	880	872	843	779	224	154	95	90	161	289	298	297	231	...
Soltustik Kazakhstan	255	227	189	180	269	42	36	13	15	18	15	14	23	18	...
Turkistan	-	-	-	1 109	1 141	-	-	-	695	681	-	-	-	31	...
Shygyys Kazakhstan	1 583	1 462	1 208	1 138	1 302	474	364	266	225	192	267	307	225	213	...
Nur-Sultan city	694	708	583	527	563	21	227	-	3	-	75	189	114	20	...
Almaty city	5 552	5 203	5 103	4 500	4 489	1 763	1 510	1 486	1 390	1 606	311	526	540	656	...
Shymkent city	-	-	-	368	324	-	-	-	274	242	-	-	-	-	...

Continuation

	Including									
	departure to oncoming traffic					pedestrian crossing an unidentified place				
	2015	2016	2017	2018	2019	2015	2016	2017	2018	2019
Republic of Kazakhstan	1 211	927	647	469	621	773	667	682	612	669
Akmola	52	15	21	21	40	43	71	71	66	56
Aktobe	86	57	48	46	82	2	-	2	2	5
Almaty	157	81	53	105	167	99	3	106	84	187
Atyrau	24	33	14	17	30	0	1	-	2	3
Batys Kazakhstan	48	-	27	24	23	48	27	14	4	34
Zhambyl	89	83	49	42	41	30	45	29	28	22
Karagandy	87	21	31	42	50	67	72	53	50	32
Kostanai	29	4	12	19	16	30	36	41	30	39
Kyzylorda	14	22	9	8	5	37	10	8	3	6
Mangystau	41	32	17	4	1	2	1	1	-	1
Ontustik Kazakhstan	279	310	249	-	-	2	8	7	-	-
Pavlodar	52	30	22	21	35	56	64	58	42	32
Soltustik Kazakhstan	18	7	8	7	2	21	14	41	28	33
Turkistan	-	-	-	67	65	-	-	-	7	19
Shygyz Kazakhstan	119	94	39	33	39	86	112	63	58	57
Nur-Sultan city	31	75	17	1	0	136	160	136	155	114
Almaty city	85	63	31	12	25	114	43	52	53	29
Shymkent city	-	-	-	-	-	-	-	-	-	-

Continuation

	Including										
	other					accidents due to driving vehicles under the influence of alcohol and drugs					
	2015	2016	2017	2018	2019	2015	2016	2017	2018	2019	
Republic of Kazakhstan	8 474	8 247	8 077	7 548	...	609	412	374	334	340	
Akmola	285	254	307	330	...	22	26	20	19	39	
Aktobe	159	316	207	253	...	71	43	15	23	27	
Almaty	628	1 124	889	922	...	66	51	38	41	43	
Atyrau	205	107	154	126	...	12	9	5	3	4	
Batys Kazakhstan	147	272	158	144	...	26	3	17	10	11	
Zhambyl	699	746	781	813	...	44	71	35	45	50	
Karagandy	384	366	327	210	...	30	17	13	7	9	
Kostanai	286	215	173	171	...	57	22	42	26	20	
Kyzylorda	252	231	224	250	...	17	17	5	15	15	
Mangystau	117	88	88	152	...	11	6	17	2	-	
Ontustik Kazakhstan	621	462	469	-	...	27	20	38	-	-	
Pavlodar	367	310	366	443	...	44	24	34	16	25	
Soltustik Kazakhstan	138	133	92	102	...	21	23	12	10	10	
Turkistan	-	-	-	298	...	-	-	-	11	23	
Shygyr Kazakhstan	513	515	547	516	...	124	70	68	93	52	
Nur-Sultan city	426	55	305	348	...	5	2	11	-	-	
Almaty city	3 247	3 053	2 990	2 376	...	32	8	4	13	11	
Shymkent city	-	-	-	94	...	-	-	-	-	1	

3.36 Number of road accidents on the roads due to the control of vehicles under the influence of alcohol and drugs*

	2015		2016		2017		2018		2019		units
	total	as a percent- age of the total number of accidents	total	as a percent- age of the total number of accidents	total	as a percent- age of the total number of accidents	total	as a percent- age of the total number of accidents	total	as a percent- age of the total number of accidents	
Republic of Kazakhstan	609	100.0	412	100.0	374	100.0	334	100.0	340	100.0	
Akmola	22	3.6	26	6.3	20	5.3	19	5.7	39	11.5	
Aktobe	71	11.7	43	10.4	15	4.0	23	6.9	27	7.9	
Almaty	66	10.8	51	12.4	38	10.2	41	12.3	43	12.6	
Atyrau	12	2.0	9	2.2	5	1.3	3	0.9	4	1.2	
Batys Kazakhstan	26	4.3	3	0.7	17	4.5	10	3.0	11	3.2	
Zhambyl	44	7.2	71	17.2	35	9.4	45	13.4	50	14.7	
Karagandy	30	4.9	17	4.1	13	3.5	7	2.1	9	2.6	
Kostanai	57	9.4	22	5.3	42	11.2	26	7.8	20	5.9	
Kyzylorda	17	2.8	17	4.1	5	1.3	15	4.5	15	4.4	
Mangystau	11	1.8	6	1.5	17	4.5	2	0.6	-	-	
Ontustik Kazakhstan	27	4.4	20	4.9	38	10.2	-	-	-	-	
Pavlodar	44	7.2	24	5.8	34	9.1	16	4.8	25	7.4	
Soltustik Kazakhstan	21	3.4	23	5.6	12	3.2	10	3.0	10	2.9	
Turkistan	-	-	-	-	-	-	11	3.3	23	6.8	
Shyrgyz Kazakhstan	124	20.4	70	17.0	68	18.2	93	27.8	52	15.3	
Nur-Sultan city	5	0.8	2	0.5	11	2.9	-	-	-	-	
Almaty city	32	5.3	8	1.9	4	1.1	13	3.9	11	3.2	
Shymkent city	-	-	-	-	-	-	-	-	1	0.3	

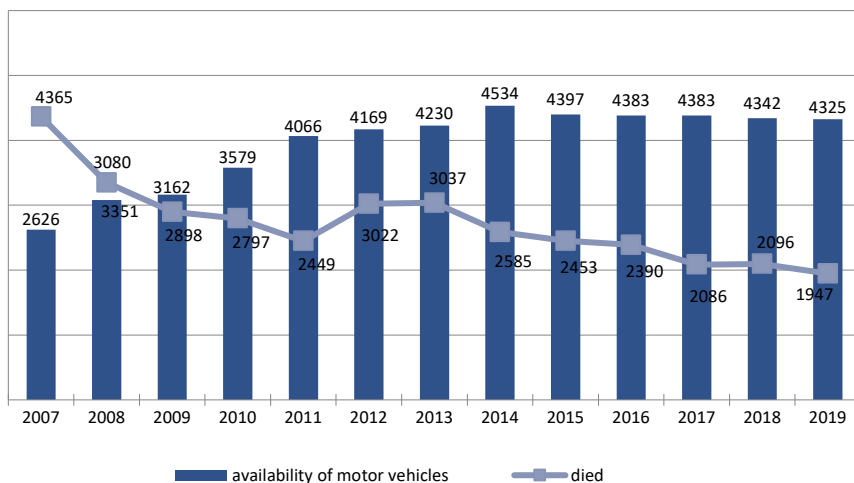
3.37 Number of victims in traffic accidents by gender*

	Total										Including died							people
											male			female				
	2015	2016	2017	2018	2019	2015	2016	2017	2018	2019	2015	2016	2017	2018	2019			
Republic of Kazakhstan																		
Akmola	26 508	25 779	24 342	22 541	24 585	1 816	1 724	1 488	1 526	1 737	637	659	598	570	668			
	863	910	1 024	894	1 203	71	77	95	75	73	28	37	40	19	32			
Aktobe	1 149	894	896	891	1 283	77	50	56	70	76	26	21	20	25	34			
Almaty	2 621	3 316	3 026	3 598	3 884	337	371	285	296	354	126	131	109	89	149			
Atyrau	566	496	382	397	489	56	51	35	47	53	23	19	19	27	12			
Batys Kazakhstan	741	638	633	560	671	68	74	69	87	94	31	18	30	24	31			
Zhambyl	2 245	2 453	2 406	2 121	2 142	186	148	103	99	133	57	62	63	45	50			
Karagandy	1 285	1 122	1 060	851	832	139	108	94	128	123	34	41	45	57	56			
Kostanai	877	676	619	557	546	76	42	51	51	39	29	22	20	18	21			
Kyzylorda	555	548	542	652	812	65	65	65	73	111	24	26	23	26	24			
Mangystau	597	520	500	487	634	64	68	66	62	55	15	29	21	21	15			
Ontustik Kazakhstan	3 443	3 253	3 128	-	-	293	305	248	-	-	97	121	95	-	-			
Pavlodar	1 451	1 293	1 246	1 247	1 213	62	58	43	51	51	30	18	14	17	18			
Soitustik Kazakhstan	359	329	272	297	388	35	34	33	37	23	10	10	6	18	7			
Turkistan	-	-	-	1 756	1 822	-	-	-	192	262	-	-	-	66	81			
Shygyys Kazakhstan	2 220	2 134	1 729	1 641	1 981	129	132	103	94	107	49	47	39	36	47			
Nur-Sultan city	818	819	684	593	730	40	28	44	27	24	17	14	16	7	12			
Almaty city	6 718	6 378	6 195	5 485	5 469	118	113	98	86	105	41	43	38	47	56			
Shymkent city	-	-	-	514	486	-	-	-	50	54	-	-	-	28	23			

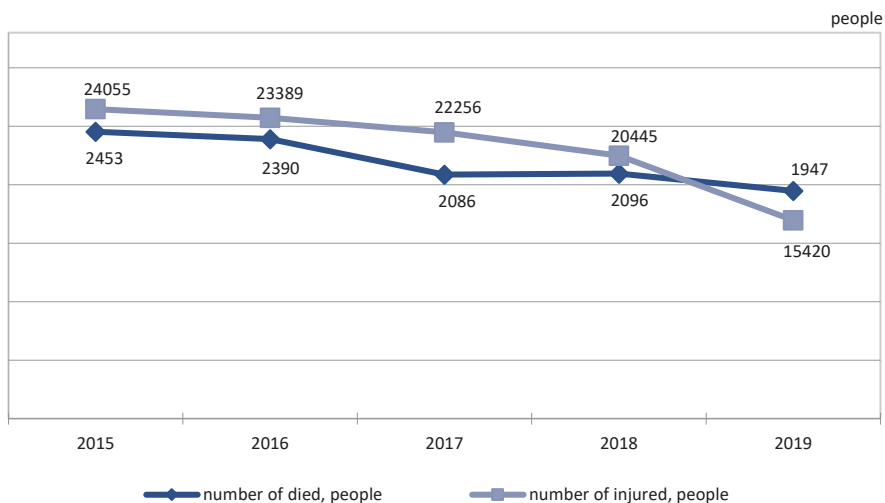
Continuation

	Including injured									
	male					female				
	2015	2016	2017	2018	2019	2015	2016	2017	2018	2019
	2015	2016	2017	2018	2019	2015	2016	2017	2018	2019
Republic of Kazakhstan	13 010	12 303	11 897	10 877	11 929	11 045	11 086	10 359	9 568	10 251
Akmola	430	462	498	482	619	334	334	391	318	479
Aktobe	572	418	423	418	610	474	405	397	378	563
Almaty	1 331	1 596	1 475	1 856	1 943	827	1 214	1 157	1 357	1 438
Atyrau	260	242	183	158	250	227	184	145	165	174
Batys Kazakhstan	367	277	330	271	327	275	269	204	178	219
Zhambyl	1 198	1 263	1 250	1 107	1 120	804	980	990	870	839
Karagandy	656	522	542	386	373	456	450	379	279	280
Kostanai	452	331	314	299	272	320	281	234	189	214
Kyzylorda	283	237	230	328	413	183	220	223	225	264
Mangystau	294	238	253	245	383	224	185	160	159	181
Ontustik Kazakhstan	1 724	1 661	1 670	-	-	1 329	1 164	1 115	-	-
Pavlodar	683	650	670	642	603	676	567	519	537	541
Soltustik Kazakhstan	161	148	135	132	202	153	137	98	110	156
Turkistan	-	-	-	869	937	-	-	-	629	542
Shygys Kazakhstan	1 028	1 010	847	775	879	1 014	945	740	736	948
Nur-Sultan city	427	420	316	258	329	334	357	308	301	365
Almaty city	3 144	2 828	2 760	2 405	2 456	3 415	3 394	3 299	2 947	2 852
Shymkent city	-	-	-	246	213	-	-	-	190	196

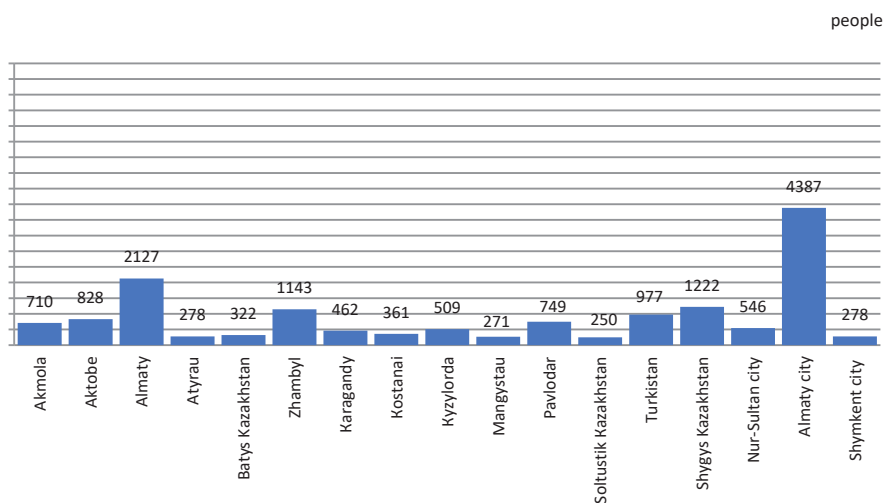
Number of died people in traffic accidents and the number of vehicles



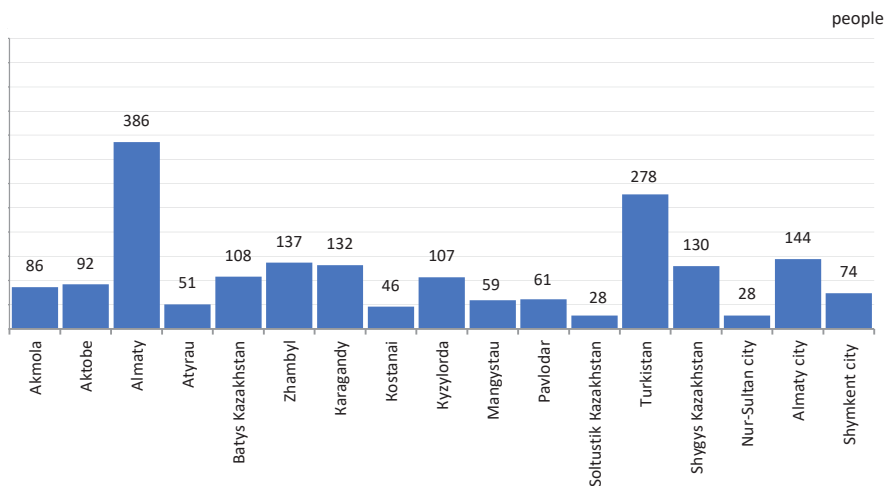
Number of died and injured people in road accidents



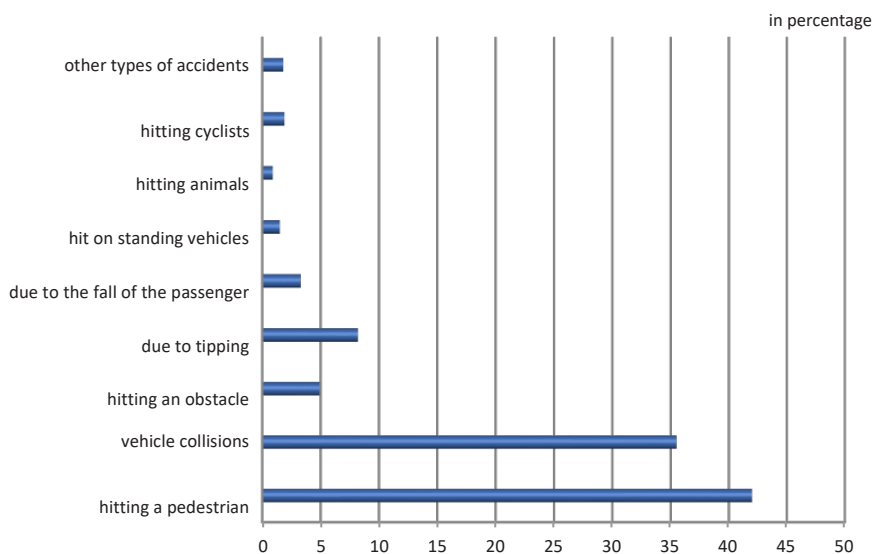
Number of injured people in road accidents for 2019



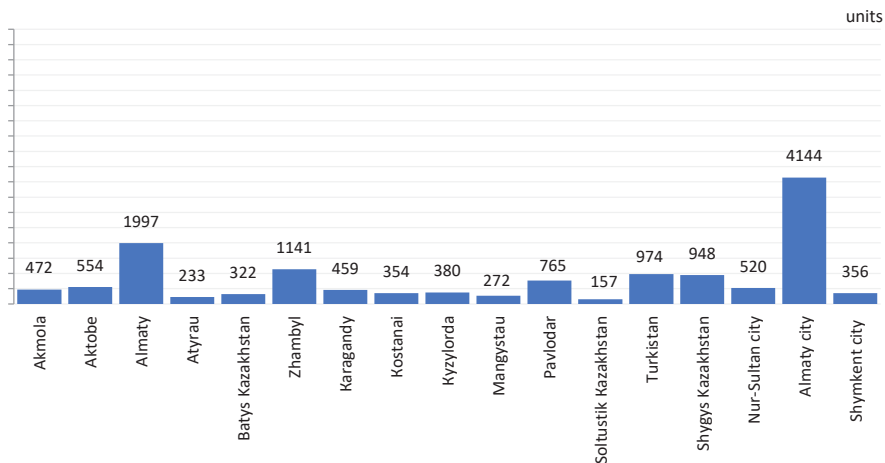
Number of died people in road accidents for 2019



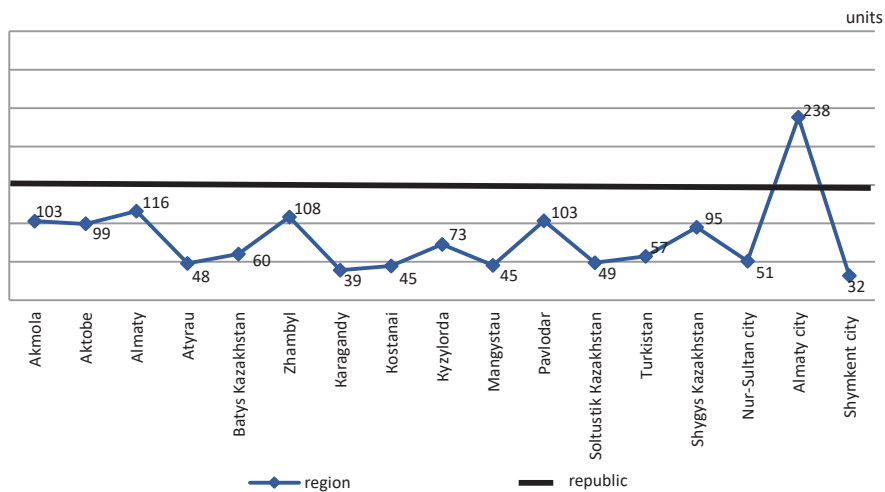
Distribution of the number of accidents by their types for 2019



Number of road accidents caused by the driver for 2019



Traffic accidents per 100000 people of the population (cases) for 2019



City electric transport

3.38 Length of operational trolleybus routes in double-track terms

	2015	2016	2017	2018	2019
Republic of Kazakhstan	137.8	137.8	114.6	114.6	114.6
Jambyl	23.2	23.2	-	-	-
Almaty city	114.6	114.6	114.6	114.6	114.6

km

3.39 Length of operational tramway routes in double-track terms

	2015	2016	2017	2018	2019
Republic of Kazakhstan	105.0	105.0	87.5	75.4	75.4
Karaganda	16.3	16.3	16.3	16.3	16.3
Pavlodar	44.6	44.6	44.6	44.6	44.6
Shygys Kazakhstan	14.5	14.5	14.5	14.5	16.5
Almaty city	29.6	29.6	12.1	-	-

km

3.40 Length of operational metropolitan roads in double-track terms

	2015	2016	2017	2018	2018
Republic of Kazakhstan	10.3	10.3	10.3	11.2	11.2
Almaty city	10.3	10.3	10.3	11.2	11.2

km

3.41 Presence of rolling stock trolleybus park

	2015	2016	2017	2018	2019
Republic of Kazakhstan	228	x	x	x	x
Jambyl	x	x	-	-	-
Almaty city	x	x	x	x	x

units

3.42 Presence of rolling stock tramway park

	2015	2016	2017	2018	2019
Republic of Kazakhstan	208	170	x	x	147
Karaganda	38	-	-	-	-
Pavlodar	111	111	106	x	x
Shygys Kazakhstan	42	42	x	54	x
Almaty city	17	17	x	-	-

units

3.43 Presence of metro wagons

	2015	2016	2017	2018	2019
Republic of Kazakhstan	7	x	x	x	x
Almaty city	7	x	x	x	x

units

3.44 Passengers transported by trolleybus

	2015	2016	2017	2018	2019
Republic of Kazakhstan	18.9	19.6	x	x	x
Almaty city	18.9	19.6	x	x	x

million people

3.45 Passengers transported by tramways

	2015	2016	2017	2018	2019
Republic of Kazakhstan	37.0	31.8	31.2	27.5	31.3
Karaganda	9.6	9.7	x	x	x
Pavlodar	15.7	16.7	x	x	15.5
Shygys Kazakhstan	7.7	5.5	5.1	x	6.0
Almaty city	4.0	-	-	-	-

million people

3.46 Trolleybus passenger traffic

	2015	2016	2017	2018	2019
Republic of Kazakhstan	102.6	93.2	x	x	x
Almaty city	102.6	93.2	x	x	x

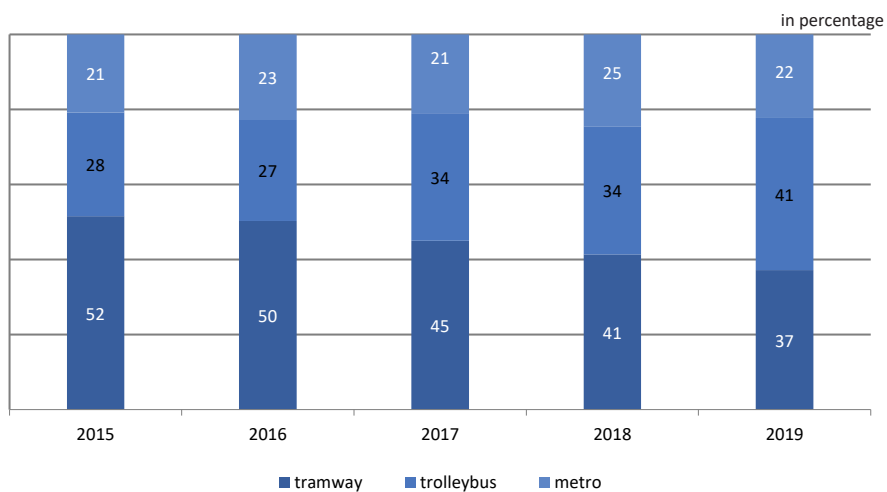
million. pkm

3.47 Tramway passenger traffic

	2015	2016	2017	2018	2019
Republic of Kazakhstan	167.9	139.3	135.2	117.2	134.8
Karaganda	19.2	19.3	x	x	x
Pavlodar	86.5	91.8	x	x	85.2
Shygys Kazakhstan	38.7	28.3	25.3	x	29.9
Almaty city	23.5	-	-	-	-

million. pkm

Income structure of enterprises of trolleybus, tramway and underground public transport from the transport of passengers



4. Water transport

4.1 Length and density of inland navigation waterways for public use and transport on them

	2015	2016	2017	2018	2019
Length of all operated navigable inland public ways, km	4 151	4 151	4 151	4 081	4 106
Density of inland waterways, km per 1000 km ² of territory	1.52	1.52	1.52	1.50	1.51
Traffic density on inland waterways for 1 km of track length:					
cargo turnover, thousand tkm	7.4	5.2	6.3	9.8	3.5
passenger turnover, pkm	104.0	282.0	170.0	138.2	173.2

4.2 Presence of rolling stock inland waterway transport

	2015	2016	2017	2018	2019
	units				
Total	141	179	171	160	155
Including:					
self-propelled cargo ships	8	9	9	9	9
dry cargo	8	9	9	9	9
non-self-propelled cargo ships (barges)	53	69	66	56	56
dry cargo	51	61	58	50	47
bulk	2	8	8	6	9
tugboats	55	74	75	68	68
passenger and cargo ships	25	27	21	27	22

4.3 Age structure of the rolling stock of inland public water transport

	2015	2016	2017	2018	2019
	at the end of the year; in percents				
Cargo self-propelled ships	100.0	100.0	100.0	100.0	100.0
including those in service, by year of production					
before 1970	25.0	22.2	22.2	22.2	22.2
1970 - 1979	12.5	22.2	22.2	22.2	22.2
1980 - 1989	37.5	33.3	33.3	33.3	33.3
1990 and later	25.0	22.3	22.3	11.2	11.1
2000 and later	-	-	-	11.1	11.1
Non-self-propelled cargo ships (barges)	100.0	100.0	100.0	100.0	100.0
including those in service, by year of production					
before 1970	9.4	11.6	10.6	7.1	5.4
1970 - 1979	18.9	13.0	12.1	12.5	17.9
1980 - 1989	56.6	49.3	48.5	48.2	42.9
1990 - 1999	5.7	5.8	6.1	5.4	5.4
2000 and later	9.4	20.3	22.7	26.8	28.6
Tugboats	100.0	100.0	100.0	100.0	100.0

	Continuation				
	2015	2016	2017	2018	2019
including those in service, by year of production					
before 1970	7.3	14.9	16.0	11.8	11.8
1970 - 1979	29.1	24.3	21.3	23.5	23.5
1980 - 1989	38.2	31.2	30.7	29.5	25.0
1990 - 1999	20.0	16.2	16.0	17.6	19.1
2000 and later	5.5	13.5	16.0	17.6	20.6

4.4 Main indicators of inland waterway transport by types of communication

	2015	2016	2017	2018	2019
Carried (transported) goods, luggage, cargo-luggage, ths. Tons	1 218.9	1 188.6	1 649.4	1 182.5	1 319.3
including by types of communication:					
International	-	-	-	x	x
CIS countries	-	-	-	-	-
transit	-	-	-	x	-
export	-	-	-	-	x
the EEU countries	-	-	-	-	x
intrarepublican	96.7	85.5	101.8	x	701.8
Suburban	1 122.3	1 103.1	1 547.1	x	609.8
Urban	-	-	0.5	x	-
Cargo handling, mln. Tkm	30.9	21.4	26.0	40.1	14.5
including by types of communication:					
International	-	-	-	x	x
CIS countries	-	-	-	-	-
transit	-	-	-	x	-
export	-	-	-	-	x
the EEU countries	-	-	-	-	x
intrarepublican	17.2	18.8	18.0	x	6.9
Suburban	13.7	2.7	8.0	26.2	3.0
Urban	-	-	0.04	x	-
Transported passengers thousand people	48.5	90.4	58.7	x	36.4
including by types of communication:					
intrarepublican	-	-	-	-	-
Suburban	21.4	27.9	22.2	x	20.0
Urban	27.1	62.5	36.5	x	x
Passenger traffic, mln. pkm	0.4	1.2	0.7	x	0.7
including by types of communication:					
intrarepublican	-	-	-	-	-
Suburban	0.1	0.5	0.1	x	0.5
Urban	0.3	0.7	0.6	x	x

4.5 Berths in ports and docks

	2015	2016	2017	2018	2019
Number of cargo and cargo-passenger berths in the ports and docs of public inland water transport, units	15	15	15	14	14

	Continuation				
	2015	2016	2017	2018	2019
of them - number of mechanized cargo and cargo-berth moorings in ports and docs	10	10	10	9	9
Total length of cargo and cargo-berth moorings in the ports and docs of inland water transport of public use, running meters	1 801	1 801	1 801	1 701	1 701
of them - the total length of the mechanized cargo and cargo-berth moorings in the ports and docs	1 751	1 751	1 751	1 651	1 651

4.6 Presence of rolling stock of nautical transport

	units				
	2015	2016	2017	2018	2019
Total ships	59	65	66	67	65
Including:					
self-propelled cargo ships	16	19	20	17	14
cargo not self-propelled ships	18	18	18	18	19
tugboat	25	28	28	32	32

4.7 Main indicators of nautical and coastal transport by types of communication

	2015	2016	2017	2018	2019
Carried (transported) goods, luggage, cargo-luggage, ths. Tons	2 476.6	2 565.5	2 102.6	x	828.1
including by types of communication:					
International	2 476.6	2 565.5	2 102.6	x	828.1
CIS countries	-	-	-	-	-
non-cis countries	-	-	-	-	-
export (export)	2 476.6	2 546.0	2 091.3	x	709.2
EAEU countries	-	-	522.4	x	x
non-EAEU countries	-	-	1 568.9	x	x
import	-	-	3.2	-	x
EAEU countries	-	-	-	-	x
non-EAEU countries	-	-	3.2	-	-
transit	-	-	8.1	-	x
intrarepublican	-	-	-	-	-
Cargo handling, mln. Tkm	1 597.6	1 772.2	1 584.2	x	675.1
including by types of communication:					
International	1 597.6	1 772.2	1 584.2	x	675.1
CIS countries	-	-	-	-	-
non-cis countries	-	-	-	-	-
export (export)	1 597.6	1 757.4	1 575.4	x	594.3
EAEU countries	-	-	355.3	x	x
non-EAEU countries	-	-	1 220.2	x	x
import	-	-	2.4	-	x
EAEU countries	-	-	-	-	x
non-EAEU countries	-	-	2.4	-	-
transit	-	-	6.3	-	x

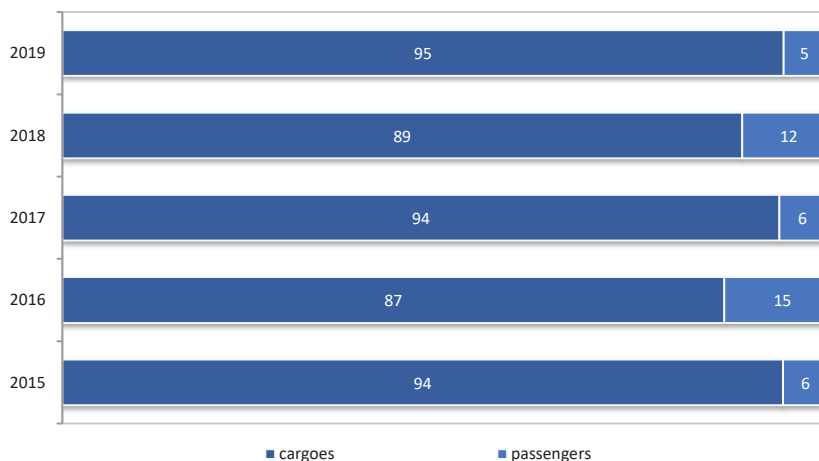
	Continuation				
	2015	2016	2017	2018	2019
intrarepublican	-	-	-	-	-
Transported passengers. thousand people	-	-	-	x	62.2
including by types of communication:					
urban	-	-	-	x	62.2
Passenger turnover. million pkm	-	-	-	x	0.4
including by types of communication:					
urban	-	-	-	x	0.4

4.8 Transportation of goods by water transport by type of cargo

	thousand tons									
	2015		2016		2017		2018		2019	
	inland water	inland water	inland water	nautical	inland water	nautical	inland water	nautical	inland water	nautical
Carried (transported) goods, luggage, cargo-luggage	1 218.9	2 476.6	1 188.6	2 565.5	1 649.4	x	1 182.5	x	1 319.3	828.1
including by type of cargo:										
raw oil	-	2 245.7	-	2 208.1	-	x	-	x	-	x
coal	29.2	-	16.5	-	x	-	23.1	-	18.4	-
timber cargo	-	-	-	-	-	-	-	-	-	-
construction cargo	829.6	-	667.5	-	x	-	x	-	680.5	-
corn	-	178.2	-	214.9	-	x	-	x	-	154.8
other goods	360.1	52.7	504.6	142.6	527.6	x	1 103.7	x	620.4	x
consumer goods not elsewhere classified	-	-	-	-	-	-	-	x	-	-
non-ferrous metal ores	-	-	-	-	-	-	x	-	-	-
From totl:										
transport of dangerous goods	-	2 245.7	-	2 208.1	-	x	-	x	-	x

Revenue structure of public inland water transport enterprises from freight and passenger transportation

in percentage



4.9 Accidents on water transport*

	2015	2016	2017	2018	2019
Number of accidents, units	8	27	10	8	6
Died, people	4	4	1	3	3
Injured, people	6	3	-	-	-

* Hereinafter, the data of the Ministry of development of infrastructure and industry of the Republic of Kazakhstan (Tables 4.9-4.11).

4.10 Number of accidents on water transport*

units

	2015	2016	2017	2018	2019
Republic of Kazakhstan	8	27	10	8	6
Almaty	-	-	-	-	1
Atyrau	-	2	-	1	1
Karaganda	-	-	1	-	-
Kyzylorda	1	2	-	4	-
Mangystau	5	19	9	-	2
Ontustik Kazakhstan	2	2	-	-	-
Pavlodar	-	-	-	-	-
Turkistan	-	2	-	2	2
Shygys Kazakhstan	-	-	-	1	-

4.11 Number of dead and injured in accidents on water transport*

	2015		2016		2017		2018		2019	
	died	injured	died	injured	died	injured	died	injured	died	injured
Republic of Kazakhstan	4	6	4	3	1	-	3	-	3	-
Almaty	-	-	-	-	-	-	-	-	1	-
Atyrau	-	-	-	-	-	-	1	-	1	-
Karaganda	-	-	-	-	1	-	-	-	-	-
Kyzylorda	1	-	1	-	-	-	-	-	-	-
Mangystau	-	3	-	-	-	-	-	-	-	-
Ontustik Kazakhstan	3	3	3	1	-	-	-	-	-	-
Pavlodar	-	-	-	-	-	-	-	-	-	-
Turkistan	-	-	-	2	-	-	1	-	1	-
Shygys Kazakhstan	-	-	-	-	-	-	1	-	-	-

5. Air transport

5.1 Presence of civil aircraft*

	2015	2016	2017	2018	2019
Total number of civil aircraft at the end of the year	850	885	895	813	...

*Hereinafter, the data of the Ministry of development of infrastructure and industry of the Republic of Kazakhstan (Tables 5.1 - 5.3).

5.2 Presence of aircraft fleet*

Type of aircraft	2015	2016	2017	2018	2019
IL-18	1	-	-	-	...
IL-62M	5	5	5	5	...
IL-76	8	8	8	10	...
Tu-134	6	6	6	5	...
Tu-154	5	5	6	4	...
An-2	309	309	308	313	...
An-12	3	3	3	3	...
An-24	25	25	25	24	...
An-26	1	2	2	2	...
An-72-100	1	1	1	-	...
Yak-40	26	24	23	22	...
Yak-42	6	6	4	4	...
Airbus	3	5	3	3	...
Boeing 727	1	1	1	1	...
Boeing 737	3	3	6	10	...
Boeing 757	3	3	3	4	...
Boeing 767	1	1	1	1	...
Mi-2	22	22	20	19	...
Mi-8	47	47	48	48	...
Mi-171	2	3	4	4	...
Mi-172	3	3	3	3	...
Mi-17	1	1	-	-	...
Mi-26	2	2	2	2	...
Ka-26	2	2	2	-	...
L-410UVP	4	4	3	3	...
Tsesna-172	-	-	-	9	...
Airplane Aviatika-890	3	3	1	1	...
Fokker-100	11	11	15	8	...
Piper	2	2	5	3	...
Agusta	6	7	8	6	...
ARM-SP	-	-	1	-	...
AS	6	6	4	3	...
Beech B-300	3	3	3	1	...
Bell 206	9	9	9	6	...
BO 105	3	3	5	7	...
Cessna	22	22	31	26	...
CL	5	4	4	4	...

Type of aircraft	Continuation				
	2015	2016	2017	2018	2019
CRJ 100 LR	2	2	2	1	...
CRJ 200 LR	6	6	8	8	...
Dornier 328-300	1	1	1	1	...
EC	35	33	32	29	...
Embraer EMB	5	5	6	4	...
King Air C90A	1	1	1	-	...
L-200 Marava	1	1	1	1	...
MD	4	4	4	3	...
Maule M7-235	3	3	4	2	...
Partenavia 68B	2	2	2	2	...
Premier 1	3	3	1	1	...
An-28	5	7	7	6	...
An-30	1	1	1	1	...
Helicopter EXEC-162F	3	3	3	3	...
Helicopter robinson-44	11	11	9	8	...
Tecnam P2002-JF	2	7	14	3	...
Eurostar EV-97 aircraft	1	1	1	1	...
F-02 Airplane	2	3	3	2	...
Airplane FESTIVAL-R40F	1	1	2	1	...
F-32m Hawk Airplane	1	1	1	-	...
Aircraft FK 14 B2 Polaris	4	4	4	4	...
P2002-JF aircraft	2	2	2	3	...
Sinus 912 aircraft	1	1	1	1	...
TL-3000 Sirius Airplane	1	1	-	1	...
Aircraft Virus 912 SW 100	1	1	1	1	...
Amphibian «L-44»	1	1	2	-	...
Aircraft JABIRU J430	2	2	2	1	...
Airplane «Maule»	1	1	-	2	...
TL aircraft	-	-	9	9	...
Sport Star Max aircraft	2	2	2	2	...
Airplane X-32 Snipe	4	4	5	3	...
Airplane Aeroprakt	5	5	5	4	...
M12 aircraft	1	1	1	-	...
Aircraft NARP-1	2	2	2	2	...
Aircraft PZL-104	6	6	7	7	...
ST aircraft	2	2	2	2	...
Su-29 aircraft	1	1	0	-	...
Airplane S-2 «SINTAL»	1	1	2	2	...
SM-92 «Finist»	1	1	1	1	...
BRM NG-5 aircraft	1	1	1	1	...
Yak 12	6	6	6	6	...
Yak 18	10	10	10	10	...
Yak 52	5	5	5	5	...
Yak 55	2	2	2	2	...
Autogyros	14	14	15	8	...
Thermal balloons	7	7	8	3	...
Deltalet	81	89	92	56	...
Hawker	1	1	1	-	...
SOCATA aircraft	3	3	4	3	...
Zenair STOL CH800	4	6	6	3	...
Ka-32 helicopter	2	2	2	2	...

Type of aircraft	Continuation				
	2015	2016	2017	2018	2019
Airplane Slepsev Storch	1	1	1	2	...
SP-30 aircraft	1	1	4	4	...
TL-2000 Sting Airplane	8	8	5	8	...
Lancair iv	1	2	1	-	...
SILA 450C	1	1	1	-	...
Tecnam P2006T	1	1	-	2	...
ZLIN Z-242L	1	1	1	1	...
Aero AT-3 R100	1	1	1	-	...
Fokker F28 Mk0100	1	1	-	10	...
Piper PA-23 aircraft	1	2	1	1	...
RRJ-95LR	-	-	1	-	...
Skyboy zk-f	-	-	1	-	...
Dragonfly 7-Gazelle SA341 helicopter	-	-	1	-	...
Motorized hang glider Eros-2	-	-	1	-	...

5.3 Availability of airports in 2019*

	units	
	Total	Of them - allowed to serve international flights
Republic of Kazakhstan	25	17
Akmola	1	1
Aktobe	1	1
Almaty	3	-
Atyrau	2	1
Batys Kazakhstan	1	1
Zhambyl	1	1
Karagandy	4	2
Kostanai	1	1
Kyzylorda	1	1
Mangystau	1	1
Pavlodar	1	1
Soltustik Kazakhstan	1	1
Turkistan	-	-
Shygys Kazakhstan	4	2
Nur-Sultan city	1	1
Almaty city	1	1
Shymkent city	1	1

* With airfields.

5.4 Transportation of passengers and goods (including postal) between separate pairs of cities:

A couple of cities starting point/ final destination	international flights for 2019*	
	passengers, people	cargo - total (including mail), tons
London - Nur-Sultan	20 479	144.1
Nur-Sultan - London	22 672	84.3
Paris - Nur-Sultan	10 562	35.4
Nur-Sultan - Paris	11 345	22.1

Continuation

A couple of cities starting point/ final destination	Traffic volume	
	passengers, people	cargo - total (including mail), tons
Amsterdam - Atyrau	18 522	180.0
Atyrau - Amsterdam	17 406	30.0
Istanbul - Almaty	45 685	265.1
Almaty - Istanbul	45 728	298.4
Istanbul - Atyrau	10 478	11.7
Atyrau - Istanbul	11 146	-
Istanbul - Nur-Sultan	29 282	101.4
Nur-Sultan - Istanbul	27 301	36.4
Antalya - Almaty	16 400	105.7
Almaty - Antalya	16 190	1.9
Antalya - Nur-Sultan	7 536	1.1
Nur-Sultan - Antalya	7 255	1.3
Frankfurt - Nur-Sultan	41 748	504.3
Nur-Sultan - Frankfurt	43 115	66.2
Frankfurt - Uralsk	3 814	3.1
Uralsk - Frankfurt	3 800	-
Frankfurt - Atyrau	4 760	11.7
Atyrau - Frankfurt	5 044	5.0
Dubai - Almaty	46 927	428.0
Almaty - Dubai	48 025	130.6
Dubai - Nur-Sultan	28 785	21.9
Nur-Sultan - Dubai	30 516	3.7
Delhi - Almaty	48 562	451.5
Almaty - Delhi	44 921	163.8
Delhi-Nur-Sultan	2 682	8.5
Nur-Sultan - Delhi	2 332	3.7
Hong Kong - Almaty	20 079	605.9
Almaty - Hong Kong	19 602	31.8
Beijing - Almaty	40 854	326.9
Almaty - Beijing	41 572	21.6
Beijing - Nur-Sultan	21 938	30.9
Nur-Sultan - Beijing	19 116	8.5
Urumqi - Almaty	14 436	56.3
Almaty - Urumqi	14 997	20.4
Urumqi - Nur-Sultan	18 246	73.3
Nur-Sultan - Urumqi	16 921	12.5
Bangkok - Almaty	35 411	342.8
Almaty - Bangkok	34 319	7.7
Bangkok - Nur-Sultan	1 745	1.8
Nur-Sultan - Bangkok	1 673	-
Kuala Lumpur - Almaty	22 259	370.2
Almaty - Kuala Lumpur	21 232	28.6
Seoul - Almaty	44 227	1 031.8
Almaty - Seoul	40 745	40.0
Seoul - Nur-Sultan	12 695	135.3
Nur-Sultan - Seoul	11 752	6.7
Moscow - Almaty	89 222	689.5
Almaty - Moscow	93 256	1 192.2
Moscow - Nur-Sultan	56 482	267.0

A couple of cities starting point/ final destination	Traffic volume	
	passengers, people	cargo - total (including mail), tons
Nur-Sultan - Moscow	59 643	131.0
Saint Petersburg - Almaty	40 016	107.2
Almaty - Saint Petersburg	66 195	138.5
Saint Petersburg - Nur-Sultan	25 537	26.7
Kazan - Nur-Sultan	7 283	-
Nur-Sultan - Kazan	7 777	4.3
Ekaterinburg - Nur-Sultan	22 985	9.5
Nur-Sultan - Ekaterinburg	24 085	21.7
Omsk - Nur-Sultan	16 999	-
Nur-Sultan - Omsk	17 205	0.9
Novosibirsk - Nur-Sultan	26 484	1.4
Nur-Sultan - Novosibirsk	24 480	31.4
Kiev - Almaty	35 750	301.4
Almaty - Kiev	37 443	183.9
Kiev - Nur-Sultan	17 870	68.8
Nur-Sultan - Kiev	18 748	32.3
Tbilisi - Almaty	24 574	18.0
Almaty - Tbilisi	26 615	59.8
Tbilisi - Nur-Sultan	14 742	1.7
Nur-Sultan - Tbilisi	16 274	13.1
Baku - Almaty	11 401	0.3
Almaty - Baku	12 627	36.0
Baku - Nur-Sultan	11 978	2.1
Nur-Sultan - Baku	12 591	7.7
Bishkek - Almaty	38 891	19.1
Almaty - Bishkek	43 156	91.9
Bishkek - Nur-Sultan	10 674	1.7
Nur-Sultan - Bishkek	10 863	1.5
Tashkent - Almaty	48 419	1.8
Almaty - Tashkent	50 304	152.5
Tashkent - Nur-Sultan	24 229	1.6
Nur-Sultan - Tashkent	26 953	15.0
Dushanbe - Almaty	22 358	6.5
Almaty - Dushanbe	23 048	127.9
Aktau - Astrakhan	6 749	0.7
Baku - Aktau	26 233	4.0
Aktau - Baku	31 427	4.6
Aktau - Krasnodar	5 216	1.8
Krasnodar - Aktau	4 788	0.4
Aktau - Makhachkala	2 197	7.4
Makhachkala - Aktau	2 227	0.3
Aktau - Mineral Waters	5 357	2.4
Mineralnye Vody To Aktau	4 894	0.3
Aktau - Moscow	8 757	3.4
Moscow - Aktau	8 497	19.2
Aktau - Istanbul	25 894	2.1
Istanbul - Aktau	25 274	1.2
Aktau - Tbilisi	11 114	1.4
Tbilisi - Aktau	8 635	0.1

Continuation

A couple of cities starting point/ final destination	Traffic volume	
	passengers, people	cargo - total (including mail), tons
Almaty - XI'an	656	-
XI'an - Almaty	561	4.1
Nur-Sultan - Yerevan	7 656	9.9
Yerevan - Nur-Sultan	4 406	9.2
Nur-Sultan - Mineral Waters	6 306	2.5
Mineral Waters - Nur-Sultan	5 826	-
Aktau - Astrakhan	6 749	0.7
Astrakhan - Aktau	6 088	0.4
Krasnodar - Atyrau	3	-
Moscow - Nur-Sultan	12 803	21.0
Nur-Sultan - Moscow	12 835	6.8
Moscow - Shymkent	12 831	105.7
Shymkent - Moscow	15 492	26.0
Aktau - Sochi	35	-
Nur-Sultan - Sochi	3 531	0.2
Sochi - Nur-Sultan	3 292	-
Istanbul - Atyrau	110	-
Istanbul - Shymkent	19 997	0.1
Shymkent - Istanbul	21 320	1.4
Vilnius - Nur-Sultan	56	0.1
Nur-Sultan - Vilnius	109	0.6
Krasnodar - Nur-Sultan	8 120	0.6
Nur-Sultan - Krasnodar	8 676	1.3
Dushanbe - Nur-Sultan	4 367	0.6
Nur-Sultan -Dushanbe	5 510	3.9
Batumi - Nur-Sultan	3 481	-
Nur-Sultan - Batumi	3 621	0.1
Prague - Nur-Sultan	6 564	-
Nur-Sultan - Prague	7 715	2.9
Ulaanbaatar - Nur-Sultan	5 601	1.2
Nur-Sultan - Ulaanbaatar	4 861	15.0
Tokyo - Nur-Sultan	1 100	0.2
Nur-Sultan - Tokyo	979	0.6
XI'an - Nur-Sultan	14	-
Nur-Sultan - XI'an	8	-
Medina - Almaty	68	-
Almaty - Medina	225	-
Jeddah - Almaty	77	-
Almaty - Jeddah	463	0.2
Medina - Shymkent	48	-
Bishkek - Almaty	472	-
Almaty - Bishkek	530	-
Osh - Almaty	572	-
Almaty - Osh	564	-
Astrakhan - Atyrau	1 546	-
Atyrau - Astrakhan	1 850	-

5.5 Transportation of passengers and goods (including postal) between separate pairs of cities: domestic flights for 2019*

A couple of cities starting point/ final destination	Traffic volume	
	passengers, people	cargo - total (including mail), tons
Nur-Sultan - Almaty	1 037 255	2 142.6
Almaty - Nur-Sultan	513 175	2 877.2
Aktobe - Almaty	54 453	72.9
Almaty - Aktobe	55 219	617.7
Uralsk - Almaty	58 236	19.8
Almaty - Uralsk	59 870	338.9
Atyrau - Almaty	101 434	225.8
Almaty - Atyrau	105 178	1 204.4
Shymkent - Almaty	152 010	54.1
Almaty - Shymkent	148 892	416.5
Kyzylorda - Almaty	33 858	17.7
Almaty - Kyzylorda	33 825	131.9
Karaganda - Almaty	62 379	166.6
Almaty - Karaganda	63 843	224.4
Pavlodar - Almaty	59 205	49.7
Almaty - Pavlodar	60 179	250.3
Ust-Kamenogorsk - Almaty	72 009	8 494.8
Almaty - Ust-Kamenogorsk	76 893	454.8
Nur-Sultan - Aktobe	91 503	167.3
Aktobe - Nur-Sultan	92 766	84.3
Uralsk - Nur-Sultan	40 961	38.9
Nur-Sultan - Uralsk	40 985	183.5
Nur-Sultan - Atyrau	113 519	367.3
Atyrau - Nur-Sultan	110 699	114.7
Shymkent - Nur-Sultan	166 752	57.6
Nur-Sultan - Shymkent	173 126	62.5
Kyzylorda - Nur-Sultan	44 436	6.5
Nur-Sultan - Kyzylorda	45 286	21.9
Kostanay - Nur-Sultan	33 408	23.4
Nur-Sultan - Kostanay	33 954	71.8
Pavlodar - Nur-Sultan	32 066	10.6
Nur-Sultan - Pavlodar	32 890	57.4
Ust-Kamenogorsk - Nur-Sultan	68 947	43.7
Nur-Sultan - Ust-Kamenogorsk	66 690	68.4
Taraz - Almaty	39 490	0.0
Almaty - Taraz	38 893	0.4
Aktau - Aktobe	19 231	9.8
Aktobe - Aktau	19 595	20.5
Aktau - Almaty	121 050	150.5
Almaty - Aktau	122 111	1 001.6
Aktau - Atyrau	74 589	40.9
Atyrau - Aktau	75 842	198.5
Aktau - Kokshetau	4 667	1.4
Kokshetau - Aktau	4 471	7.6
Aktau - Nur-Sultan	79 941	64.5
Nur-Sultan - Aktau	84 066	329.2
Aktau - Uralsk	19 126	22.9

Continuation

A couple of cities starting point/ final destination	Traffic volume	
	passengers, people	cargo - total (including mail), tons
Uralsk - Aktau	19 040	12.2
Aktau - Shymkent	35 626	5.1
Shymkent - Aktau	37 709	57.4
Almaty - Kokshetau	4 718	9.4
Kokshetau - Almaty	4 775	1.2
Almaty - Kostanay	11 623	85.1
Kostanay - Almaty	11 016	11.0
Almaty - Petropavlovsk	7 255	8.1
Petropavlovsk - Almaty	6 911	0.4
Almaty - Semey	19 461	46.7
Semey - Almaty	19 166	10.7
Almaty - Usharal	7 431	1.1
Usharal To Almaty	7 627	0.3
Karaganda - Kyzylorda	2 393	0.4
Kyzylorda - Karaganda	2 197	0.4
Karaganda - Nur-Sultan	263	-
Nur-Sultan - Karaganda	262	-
Karaganda - Ust-Kamenogorsk	4 072	0.5
Ust-Kamenogorsk - Karaganda	3 732	0.9
Nur-Sultan - Petropavlovsk	4 092	6.4
Petropavlovsk - Nur-Sultan	3 339	0.1
Nur-Sultan - Semey	21 212	4.4
Semey - Nur-Sultan	21 182	0.5
Nur-Sultan - Taldykorgan	13 763	7.4
Taldykorgan - Nur-Sultan	13 957	24.7
Nur-Sultan - Taraz	34 497	14.4
Taraz - Nur-Sultan	33 878	20.1
Nur-Sultan - Usharal	4 008	0.3
Usharal - Nur-Sultan	4 055	1.1
Petropavlovsk - Taraz	10	-
Petropavlovsk - Shymkent	4 092	0.1
Shymkent - Petropavlovsk	3 671	2.0
Semey - Shymkent	27	0.2
Shymkent - Karaganda	169	-
Taldykorgan - Usharal	6 425	-
Usharal - Taldykorgan	6 965	-
Almaty - Talldykorgan	3	-
Taldykorgan - Ust-Kamenogorsk	5	-
Ust-Kamenogorsk - Taldykorgan	8	-
Taldykorgan - Shymkent	15	-
Shymkent - Atyrau	5 785	6.4
Atyrau - Shymkent	5 734	0.3
Pavlodar - Shymkent	79	-
Zhezkazgan - Balkhash	601	-
Balkhash - Zhezkazgan	515	-
Aktobe - Atyrau	19 255	-
Atyrau - Aktobe	19 840	-
Nur-Sultan - Zhezkazgan	12 336	-
Zhezkazgan - Nur-Sultan	11 323	-

Continuation

A couple of cities starting point/ final destination	Traffic volume	
	passengers, people	cargo - total (including mail), tons
Atyrau - Uralsk	11 018	-
Uralsk - Atyrau	8 193	-
Ust-Kamenogorsk - Atyrau	2 132	-
Almaty - Balkhash	4 049	-
Balkhash - Almaty	4 725	-
Almaty - Urdzhar	5 060	-
Urdzhar - Almaty	5 269	-
Balkhash - Nur-Sultan	3 370	-
Nur-Sultan - Balkhash	3 074	2.1
Nur-Sultan - Urjar	5 284	9.3
Urjar - Nur-Sultan	5 400	9.3
Ust-Kamenogorsk - Zaisan	3 722	-
Zaisan - Ust-Kamenogorsk	4 315	7.1
Ust-Kamenogorsk - Semey	694	-
Semey - Ust-Kamenogorsk	416	-
Urjar - Semey	2 815	-
Semey - Urjar	2 397	9.3
Urjar - Ust-Kamenogorsk	414	-
Ust-Kamenogorsk - Urjar	405	-

5.6 Carried (transported) goods, luggage, cargo-luggage by air transport for public use

	tons				
	2015	2016	2017	2018	2019
Republic of Kazakhstan	17 178.2	18 015.9	22 531.0	44 140.0	26 721.1
Batys Kazakhstan	131.0	x	x	x	x
Ontustik Kazakhstan	x	x	x	-	-
Almaty city	15 956.2	16 810.9	20 432.0	40 560.0	22 551.1
Shymkent city	-	-	-	x	x

5.7 Cargo turnover of public air transport

	thousand tkm				
	2015	2016	2017	2018	2019
Republic of Kazakhstan	42 699.9	42 903.5	53 793.0	57 629.0	83 830.3
Batys Kazakhstan	189.3	x	x	x	x
Ontustik Kazakhstan	x	x	x	-	-
Almaty city	40 704.6	41 060.5	50 609.0	52 509.0	77 192.3
Shymkent city				x	x

5.8 Passengers transported by public air transport

	thousand people				
	2015	2016	2017	2018	2019
Republic of Kazakhstan	5 922.8	6 021.7	7 363.7	7 555.6	8 644.9
Almaty	25.2	16.2	10.6	x	12.7
Atyrau	4.3	0.1	0.2	x	-
Batys Kazakhstan	332.4	x	x	x	x
Karaganda	x	x	x	x	x
Ontustik Kazakhstan	1 224.7	1 288.9	1 931.8	-	-
Turkistan				-	0.008
Nur-Sultan city	5.2	34.6	33.2	33.4	x
Almaty city	4 324.4	3 945.5	4 467.0	4 380.2	5 538.3
Shymkent city	-	-	-	2 216.7	2 378.2

5.9 Passenger traffic of public air transport

	million. pkm				
	2015	2016	2017	2018	2019
Republic of Kazakhstan	11 153.3	11 313.0	14 383.7	14 989.7	16 885.5
Almaty	21.5	14.2	9.1	x	3.8
Atyrau	1.1	0.05	0.1	x	-
Batys Kazakhstan	462.8	x	x	x	x
Karaganda	x	x	x	4.8	x
Ontustik Kazakhstan	2 267.8	1 927.0	3 668.2	-	-
Turkistan				-	0.004
Nur-Sultan city	6.2	98.1	115.8	114.0	x
Almaty city	8 389.3	8 206.9	9 350.5	x	10 864.3
Shymkent city	-	-	-	4 007.6	5 033.8

5.10 Main indicators of air transport work by types of communication

	2015	2016	2017	2018	2019
Transported passengers thousand people	5 922.8	6 021.7	7 363.7	7 555.6	8 644.9
including by types of communication:					
International	2 094.5	2 078.5	2 778.5	3 243.3	3 291.1
CIS countries	861.6	-	-	-	-
non-cis countries	1 232.9	-	-	-	-
Intrarepublican	3 828.3	3 943.1	4 585.2	4 312.3	5 353.7
Passenger traffic, mln. pkm	11 153.3	11 313.0	14 383.7	14 989.7	16 885.5
including by types of communication:					
International	6 519.6	6 402.0	8 855.6	9 696.9	10 686.5
CIS countries	1 834.8	-	-	-	-
non-cis countries	4 684.8	-	-	-	-
Intrarepublican	4 633.7	4 911.0	5 528.0	5 292.7	6 199.0
Carried (transported) goods, luggage, cargo-luggage, tons	17 178.2	18 015.9	22 531.0	44 140.0	26 721.1
including by types of communication:					
International	8 247.0	8 169.0	10 272.0	11 813.0	11 829.3
CIS countries	2 810.0	-	-	-	-
non-cis countries	5 437.0	-	-	-	-
export	-	-	3 024.0	X	3 541.9

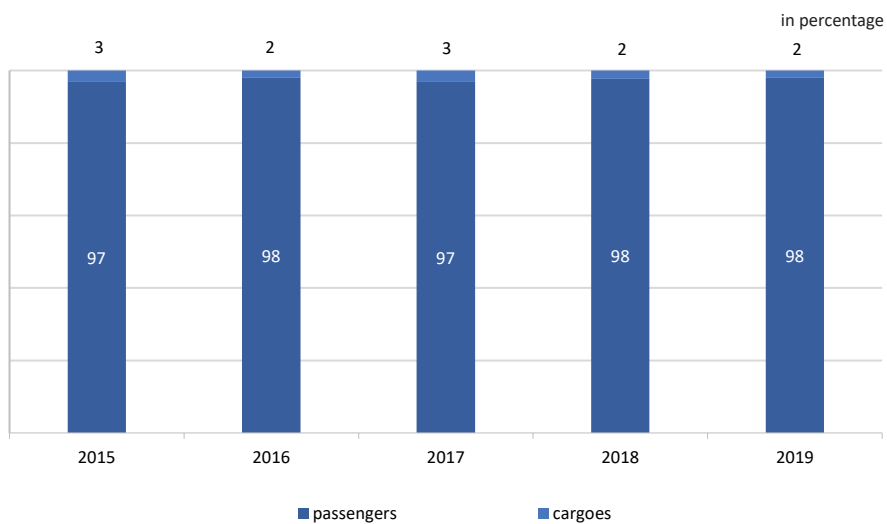
Continuation					
	2015	2016	2017	2018	2019
EAEU countries	-	-	1 535.0	x	1 949.8
non-EAEU countries	-	-	1 489.0	1 625.0	1 592.1
import	-	-	7 248.0	8 437.0	8 287.4
EAEU countries	-	-	1 709.0	1 859.0	1 597.2
non-EAEU countries	-	-	5 539.0	6 578.0	6 690.2
tranzit	-	-	-	x	-
Intrarepublican	8 931.2	9 846.9	12 259.0	32 327.0	14 891.8
Cargo turnover, mln. Tkm	42.7	42.9	53.8	57.6	83.8
including by types of communication:					
International	30.7	30.7	38.8	41.8	66.1
CIS countries	7.6	-	-	-	-
non-cis countries	23.1	-	-	-	-
export	-	-	10.1	x	12.2
EAEU countries	-	-	4.7	x	5.9
non-EAEU countries	-	-	5.4	6.8	6.3
import	-	-	28.7	x	53.9
EAEU countries	-	-	5.3	x	5.2
non-EAEU countries	-	-	23.4	23.9	48.7
tranzit	-	-	-	x	-
Intrarepublican	12.0	12.2	15.0	15.8	17.7

5.11 Accidents in air transport*

	2015	2016	2017	2018	2019
Number of accidents, units	7	3	8	-	102
Died, people	8	7	11	-	19
crew members	5	3	7	-	...
passengers	3	4	4	-	...
Injured people	1	-	5	-	49
crew members	-	-	3	-	...
passengers	1	-	2	-	...

*According to the Ministry of development of infrastructure and industry of the Republic of Kazakhstan.

Revenue structure of public transport enterprises from the transport of goods and passengers



6. Pipeline transport

6.1 Length of trunk pipelines

	km				
	2015	2016	2017	2018	2019
Trunk pipelines – Total	23 275.7	23 270.6	23 268.4	23 334.3	23 438.8
Including:					
length of gas pipelines	15 264.5	15 255.5	15 255.5	15 321.4	15 424.9
length of oil pipelines	8 011.2	8 015.1	8 012.9	8 012.9	8 013.9
Density of trunk pipelines, km per 1000 km ² of territory	8.5	8.5	8.5	8.6	8.6
Density of cargo transportation through trunk pipelines, mln. Tkm per 1 km of pipeline length	5.0	4.9	5.6	6.0	5.8

**According to the Ministry of Energy of the Republic of Kazakhstan.*

6.2 Cargo transported through pipelines by type of cargo

	million tons				
	2015	2016	2017	2018	2019
Transported goods	214.6	205.8	232.8	281.4	273.0
Including:					
gas	90.6	82.9	x	102.9	94.7
from it - transit	-	33.0	67.7	72.5	62.8
oil	123.9	122.9	x	178.6	178.4

6.3 Freight turnover of trunk pipelines by type of cargo

	billion tkm				
	2015	2016	2017	2018	2019
Freight turnover	115.4	114.5	129.5	x	136.7
Including:					
gas	46.4	47.8	54.3	x	63.0
oil	69.0	66.7	75.2	74.2	73.8

6.4 Cargo transported through pipelines

	million tons				
	2015	2016	2017	2018	2019
Republic of Kazakhstan	214.6	205.8	232.8	281.4	273.0
Atyrau	68.6	70.1	78.3	x	114.2
Pavlodar	x	x	43.5	x	x
Retained volume by regions	112.4	102.5	x	x	114.3

6.5 Freight turnover of trunk pipelines

	billion tkm				
	2015	2016	2017	2018	2019
Republic of Kazakhstan	115.4	114.5	129.5	x	136.7
Atyrau	38.2	38.7	42.1	x	42.2
Pavlodar	x	x	16.1	x	x
Retained volume by regions	63.5	62.8	x	x	78.8

Methodological notes

Main economic indicators of transport

Gross value added is calculated at the level of branches of the economy as the difference between the output of goods and services and intermediate consumption. The term "gross" indicates that the indicator includes the value of fixed capital consumed in the production process.

Intermediate consumption is equal to the cost of goods and services that are transformed or fully consumed in the production process in the reporting period. Consumption of fixed capital is not included in intermediate consumption.

Gross domestic product at the production stage is obtained by summing the gross value added by industry. Gross domestic product is calculated at market prices, i.e. includes net taxes on products and imports. The term "net" means that taxes are shown net of related subsidies. This is one of the most important indicators of the system of national accounts, which characterizes the final result of the country's economic activity.

Payroll number of employees - the number of persons admitted under the employment contract, regardless of the length of his detention.

The average monthly nominal wage per employee is determined by dividing the amount of the accrued wage fund by the actual number of employees and the number of months in the reporting period..

Investments in fixed assets - investments in order to obtain investors of economic, social or environmental effect in the case of new construction, expansion, as well as reconstruction and modernization of facilities, which lead to an increase in the initial value of the object, as well as the purchase of machinery, equipment, vehicles, on the formation of the main herd, perennial plants, etc.

Capacity commissioning is an indicator of capacity (productivity, capacity, capacity, area, length, etc.) created as a result of investment in fixed assets.

Fixed assets (funds) - produced assets with a service life of more than one year, created in the production process, which for a long time are repeatedly or permanently used in the same natural-material form for the production of goods, rendering market and non-market services, gradually losing their value.

Book value is the initial or current value of fixed assets minus the amount of accumulated depreciation at which the asset is recorded and reported (residual value).

Depreciation is the process of loss of physical and moral characteristics of fixed assets, which reflects the aging of existing fixed assets.

Import of goods - import from abroad of goods of foreign origin intended for domestic use and for re-export.

Income (loss) from ordinary activities is a net financial result and is defined as the difference between gross income, which is the difference between income from sales of products (works, services) and cost of sales (works, services) as a result of the main activity and expenses of the period.

The profitability of enterprises (organizations) characterizes the effectiveness of their activities, calculated as the ratio of income (loss) from ordinary activities to the costs of production and sales of products (works, services).

Debt obligations - includes debts to suppliers for products shipped, work performed and services rendered, including those secured by issued promissory notes and advances; compensation for material damage. In addition, the debt on liabilities includes the debt of the company on all types of payments to the budget, on the issuance of funds to employees for wages and other payments, on payments to extrabudgetary (pension and other) funds.

Receivables of the enterprise - customers' debt for products shipped, work performed and services rendered, including those secured by the received promissory notes and advances; compensation for material damage.

The tariff index for cargo transportation characterizes the change in tariffs for cargo transportation

services by various types of transport (rail, pipeline, inland waterway, road, air). When constructing it, a weighing scheme is used, which is formed on the basis of data on income received by transport enterprises from the provision of cargo transportation services for the previous year.

Tariff indices for passenger transport services characterize the change in tariffs for passenger transportation by various types of transport (rail, road, electric (tram, trolleybus), air). In their construction, a weighting scheme is used, which is formed on the basis of data on household expenditures on passenger transport services for the previous year.

The transport of the Republic of Kazakhstan is a rail, road, sea, inland waterway, air, city electric system registered on its territory, including the metro, as well as the main pipeline transport in the territory of the Republic of Kazakhstan.

Public transport - transport that meets the needs of all sectors of the economy and the population in the transport of goods and passengers, moving various types of products between producers and consumers, providing public transport services to the population. Transportation of public transport includes transportation on a commercial basis (for a fee) of passengers (including citizens enjoying the right to free travel on public transport) or cargo. A carriage made by a commercial organization is recognized as carriage by public transport if the law, other legal acts or permission (license) issued to that organization implies that the organization is obliged to transport goods, passengers and baggage upon the request of any citizen or legal entity.

Cargo transported (volume of cargo transportation) - the amount of cargo in tons carried by transport. It is accounted for by means of transport, messages, kind of goods. The initial moment of the process of transportation of goods is reflected by the indicator "sent (dispatch) of goods", the final moment - by the indicator "arrived (arrival) of goods". For individual transport enterprises, the indicator "transported (transportation) of goods" is used to characterize the total volume of work, which is defined as the sum of shipped goods and received cargo from other transport enterprises for transportation.

Passengers transported - the number of passengers transported over a certain period of time. It is accounted for by means of transport, messages. The unit of observation in passenger traffic statistics is the passenger-ride.

Freight turnover of transport - the volume of work of transport for the transport of goods, expressed in ton-kilometers. It is defined as the sum of the products of the weight of each batch (dispatch) of the transported cargo for the distance of its transportation

Passenger traffic - the amount of work of transport for the transport of passengers. The unit of measurement is passenger-kilometer, i.e. movement of a passenger over a distance of 1 km. It is determined by summing the products of the number of passengers for each transportation position over the transportation distance; calculated separately by means of transport, traffic announcements, other signs.

The volume of freight and passenger transportation (freight traffic, passenger turnover) includes data from enterprises with the main type of activity "transport", as well as an assessment of the volume of freight and passenger traffic performed by individual entrepreneurs engaged in commercial transportation.

The length of the network of communications - the total length in kilometers of sections of transport routes. Is determined on the reporting date by summing up the lengths of individual sections forming the network.

Network density is the length of the communication lines in kilometers per unit area of the territory (usually 1000 km²) of a country or region.

Revenues from transportation - the amount of funds received by transport enterprises for the carriage of goods (including mail), passengers (including baggage), additional services for transportation and for the use of property of transport rendered to the consignors of goods and passengers.

The total revenues of transport enterprises also include revenues from the rental of rolling stock, loading and unloading and forwarding works, maintenance of access roads, sea and inland waterways, the use of aviation in industries, auxiliary and auxiliary activities.

Railway transport

In rail transport, the volume of goods transported represents the sum of imported and exported goods, transit traffic and shipments in the republican traffic.

Freight turnover (gross freight trains without locomotive weight) characterizes the volume of transportation work performed for the delivery of goods, taking into account the distance of transportation. This takes into account the total weight of cargo and all internal and external wrappers, packaging, coating and supporting structures, such as pallets, excluding container and road freight vehicles and equipment tare, including when using steam traction, electric traction, diesel traction .

Net turnover - characterizes the carriage of goods without any packaging only in a wrapper or with inner packaging for a certain distance.

In determining the volumes of passenger traffic, accounting covers the carriage of passengers in passenger cars, motor carriage rolling stock, in diesel trains and railcars, in freight cars allocated for the carriage of passengers on the public railway network in use.

Passenger turnover characterizes the volume of work performed on the carriage of passengers of the railway, railway and network in passenger-kilometers, calculated by multiplying the number of passengers carried by the distance of transportation, taken into account.

Revenues from transportation include receipts from the carriage of goods, passengers, baggage.

Revenues from freight transportation are made up of freight charges, payment of initial and final operations, and additional fees for the passage of conductors, for shifting cars from one gauge to another, etc.

Revenues from passenger transportation include the amount of freight and various surcharges: for speed, sleeper, travel in the compartment and soft wagons, etc.

Income from transportation of baggage is determined by the amounts of freight and additional fees indicated in the baggage stubs.

The operational length of the line is the extension of the main path, measured between the axes of separate points with track development (stations, passing points, and overtaking points) that limit this line. The operational length is determined only for main paths. At the points of contact of neighboring distances of the track (roads, sections of roads and other divisions), the operational length is determined from (or to) the established boundaries of these divisions.

Lokomotiv - a railway vehicle equipped with prime mover and motor or with motor only, and only used for hauling railway vehicles.

Railcar - a motorized railway vehicle designed for the transport by rail of passengers or cargo.

In the fleet of cargo wagons that are at the disposal of the road, take into account the freight wagons of the cash fleet, which are divided into: covered; semi-wagon; tanks; refrigerators; other wagon.

Passenger wagon - passenger rail vehicle with the exception of railcar or trailer wagon motorwagon train.

Baggage wagon - a railway vehicle that does not have an engine, is a part of a passenger or freight train and is used by the train crew, if necessary, also for carrying luggage, cargo spaces, bicycles, etc.

The turnover of the working wagon, the day is the time of the full production cycle of its work - from one loading to the next loading. This cycle includes time in moving on the hauls, idle time at intermediate stations, time spent under cargo operations and at technical stations. The average turnover time of a freight wagon on the railway network is determined by the ratio of the time spent by the total working park (in wagon days) to the number of wagons loaded.

The performance of a working park wagon per day, net, tkm is determined by dividing the operating ton ton-kilometers by the average daily working fleet of wagons.

Other land transport

Passenger transportation by buses is calculated as the sum of all passengers transported by buses in the city, suburban, intercity and international traffic, regardless of the applicable fare, as well as including passengers using the right of free travel or travel documents paid by enterprises (organizations).

Transportation of passengers by trams, trolley buses include the number of citizens with paid travel and enjoying the right of free travel.

Freight traffic includes total volumes of trucks, pick-ups and vans on the chassis of cars and trailers. Accounting of the transported goods is carried out at the time of arrival. The volume of transported goods is indicated by the actual weight of the transported goods, taking into account the weight of the container, the weight of containers for each ride (arrival).

Freight turnover in road transport is determined by multiplying the weight of the transported cargo (including cargo transported on trailers) for each trip to the distance of the trip, followed by summing up the works for all trips.

Automotive rolling stock is divided into cargo, passenger and special. For freight include trucks, towing vehicles, trailers and semi-trailers. Passenger rolling stock includes buses, cars, passenger trailers and semi-trailers, special-cars, trailers and semi-trailers, designed to perform various, mostly non-transport works.

The length of the highway is calculated from the initial to the final settlement by summing up the lengths of individual sections that form the road network.

Public roads - non-urban roads, which are the property of the Republic of Kazakhstan and are divided by value into roads of international, republican, regional and district significance, as well as by technical categories and by type of coverage.

The hard roads cover: improved coating (cement concrete, asphalt concrete and asphalt concrete type, made of crushed stone and gravel, treated with organic binders), as well as crushed stone, gravel and bridge coating.

The length of the developed tram (trolleybus) track (line) in single track terms includes the length of all tracks (lines) that are on the balance of the tram (trolleybus) economy at the end of the reporting year: passenger, freight, depot, junction, junction, slewing rings and other tracks.

Inland water transport

Cargo transportation by river transport is measured by the amount of cargo sent by the river transport enterprises of the country in all types of communications by river and lake vessels, both own and leased from other shipowners.

Cargo turnover is determined by multiplying the weight of shipment in tons per distance of transportation, and then by summing the results for all shipments.

The data on the carriage of passengers on inland waterway transport includes all dispatched passengers issued with appropriate travel documents (paid and discounted passenger tickets, documents of group transportation - military, excursion, etc.).

The passenger turnover of inland waterway transport is determined for each trip, based on the number of passengers and the distance of each passenger from the point of departure to the destination by multiplying the number of passengers sent by the distance each passenger is transported and summing the results.

Revenues from inland water transport include income accrued to the reporting enterprise for transportation of goods and passengers under the current types of tariffs that are made on the shipping documents.

Inland waterways - natural or artificially created routes of communication, indicated by navigation marks or otherwise, and used for navigation purposes.

The length of inland navigable waterways in operation is the navigable part of rivers, lakes, reservoirs, and artificial canals with hydraulic structures. The navigable waterway conditions are characterized by the dimensions of the channel; depth, width and radius of rounding.

The length of inland navigable waterways in operation is measured along the center line of the serviced ship passages (fairways), defined as the sum of the lengths of rivers, lakes, canals, transport routes, and reservoirs along which ships move and towing rafts.

Transport vessels should include self-propelled and non-self-propelled vessels intended for the carriage of goods and passengers.

The self-propelled ships include vessels that have a propulsion system (engine) and a propulsion unit (paddle wheel, propeller screw, water cannon). They are divided into cargo, tow, cargo and passenger ships.

Non-self-propelled cargo ships include non-self-propelled barges intended for towing or pushing and not having an independent propulsion system used for the transport of dry cargo and bulk cargo.

Towing vessels include towing and pushing towers, tugs, pushing tows, which are designed to tow or push non-self-propelled vessels and rafts.

The cargo-passenger vessels include premises for passengers and holds for the carriage of goods. These include those ships carrying passengers which are authorized by the shipping supervisory authorities.

Passenger ships are those intended for the carriage of passengers and their baggage on inland waterways, as well as for leisure and tourist travel.

Air transport

The number of passengers transported by air is calculated as the sum of the number of all passengers transported in the reporting period by transport aircraft.

Passenger traffic in air transport is defined as the sum of the products of the number of passengers carried in each flight segment for the corresponding operational distance to this segment.

In air transport, the amount of cargo carried is calculated as the sum of the weight of all goods, mail and paid baggage transported in the reporting period by aircraft.

Cargo turnover of air transport is defined as the sum of the products of the number of tons of cargo and mail transported in each flight segment to the operational distance corresponding to this segment.

Revenues from transport aviation include income from passenger, mail and cargo traffic on international air lines, lines of domestic traffic.

Pipeline transport

For pipeline transport, the volume of cargo transportation means the transfer of oil (oil products, gas), i.e. transportation of goods through pipelines - the initial shipment of cargo accepted by pipeline transport enterprises for delivery from production or production areas or from abroad to consumption points (transshipment bases, processing enterprises, gas distribution stations, wagon-tanks, tanker ships, tank cars, etc.). Determined at the time of injection of cargo into the pipeline according to the indications of flow meters and meters. The pumping of natural gas is taken into account in units of volume and is converted into units of mass (mass) according to the following ratio: 1 cubic meter = 0.8 kg or 1000 cubic meters of gas = 0.8 ton or 1 ton = 1250 cubic meters.

Freight turnover of pipeline transport - the amount of work on the movement of oil, petroleum products and gas through trunk pipelines. It is defined as the sum of products of volumes of oil (petroleum products, gas) pumped in tons per pumping distance from the inlet manifold of the main pumping station to the inlet manifold of the plant, filling station, oil depot, gas distribution system, etc. It is determined by all pipelines as a whole and separately by oil pipelines, pipelines (by type of oil products) and gas pipelines.

Revenues from the transportation of oil and oil products are determined by the tariff fee for the transfer, transshipment and loading of these goods. Gas transportation revenues are determined by multiplying the tariff for the transportation of 1000 cubic meters of gas by the volume of transportation.

The concept of pipeline includes: gas pipeline, gas condensate pipeline, oil pipeline, oil product pipeline, coal pipeline. The pipeline is designed to transport goods of any shippers and any consignees.

The length of the main oil pipelines and oil product pipelines is calculated as the sum of the lengths of the main sections of pipelines for pumping oil and oil products located in the country; measured in kilometers of a single stretch.

The length of main gas pipelines is defined as the sum of the linear extensions of sections of individual gas pipeline lines supplying gas from a pumping station to distribution and industrial enterprises in the country. These data do not cover the length of the gas distribution network that supplies gas to residential consumers. Measured in kilometers of a single stretch.

Responsible for release:
Ministry of National economy of the
Republic of Kazakhstan
Committee on Statistics
Division of service and energy statistics
Head of Division
G.S. Karaulova
Tel. +7 7172 749060

Computer layout and design:
“B-PROFIT” IE